



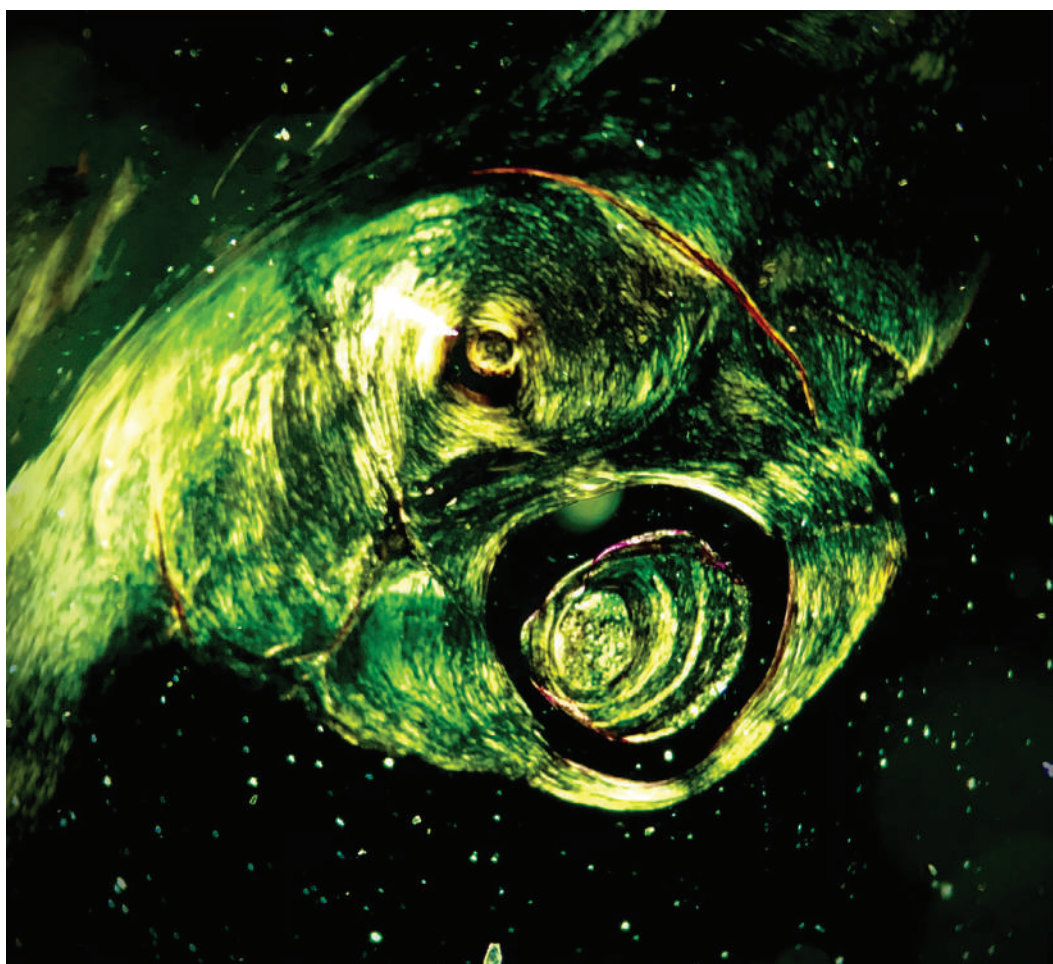
**PSP**  
**SNAPSHOTS**  
**PHOTOMICROSCOPY**  
**CONTEST 2021**



**OMNIBUS**  
BIO-MEDICAL SYSTEMS, INC.

---

## INSTITUTION CATEGORY



### FIRST PLACE

PHILIPPINE HEART CENTER

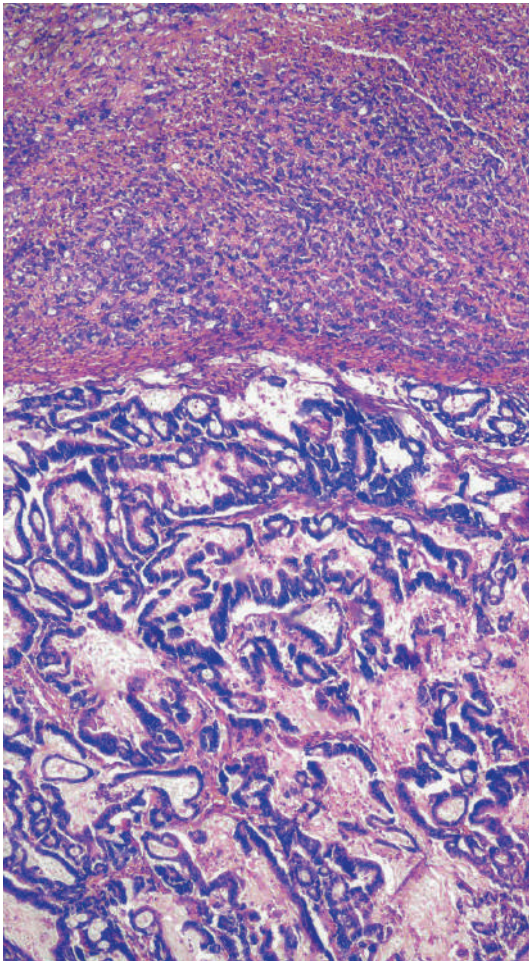
#### *"The Invasion Begins"*

"A long time ago from a galaxy far, far away... a galactic strike ship from an unknown planet is ready to conquer and invade the universe."

This photomicrograph is a mitral valve from a patient with rheumatic heart disease with amyloid accumulation then stained with congo-red which shows the characteristic apple-green birefringence on polarizing microscope.

*Captured using Olympus CX31-P at 100x magnification.*

## INSTITUTION CATEGORY



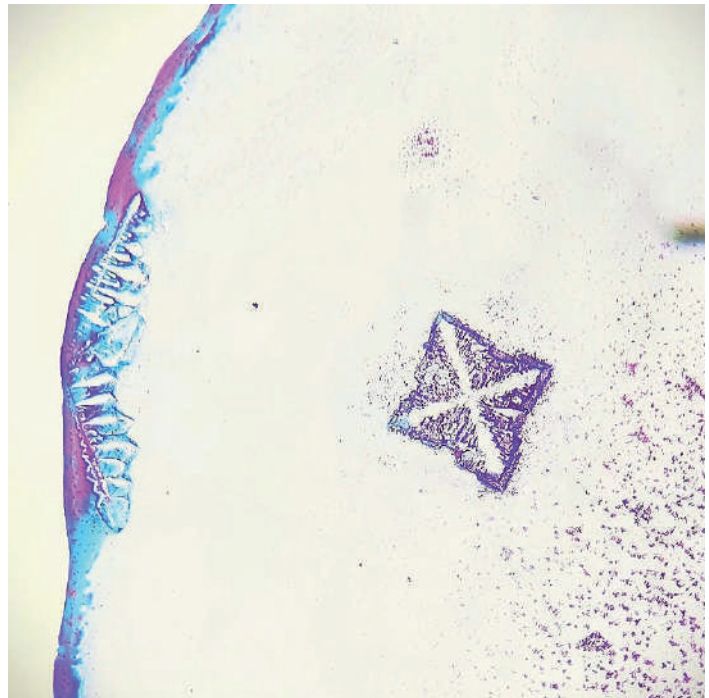
### SECOND PLACE

**WEST VISAYAS STATE UNIVERSITY  
MEDICAL CENTER**

#### ***"Where the Sand Meets the Sea"***

"Underneath the lens, one may find a place where serenity greets the uproar, where the ocean finds the shore, where the sand meets the sea, akin to the collision of these two distinct tumors."

Image total magnification: 40x.



### THIRD PLACE

**JOSE B. LINGAD MEMORIAL GENERAL HOSPITAL**

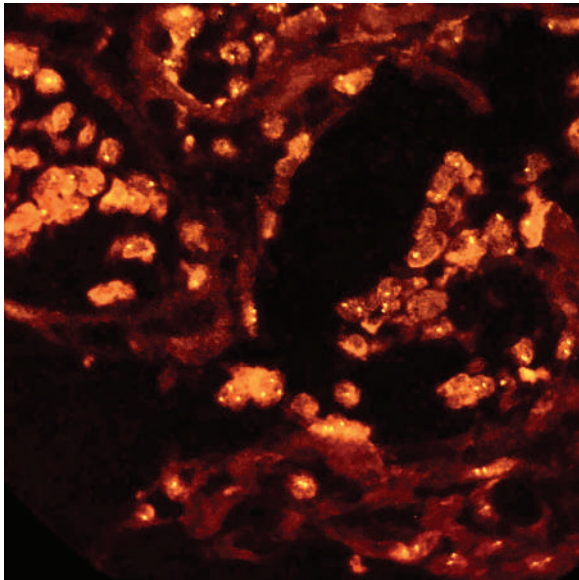
#### ***"At the Cross, I Bow My Knee"***

"A glimmer of hope in this trying time, a reminder that amidst the fear, anxiety, and weariness in our daily battle against this pandemic, we have Him to hold on to."

Pleural fluid aspirate in 40x magnification.



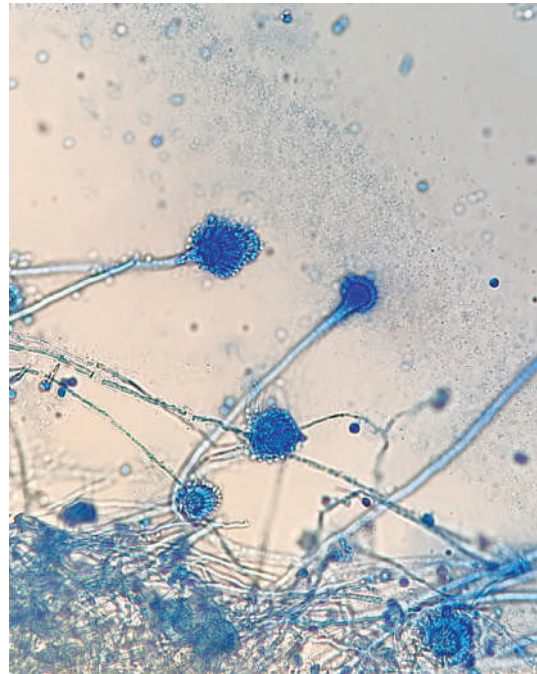
## INSTITUTION CATEGORY



### THE MEDICAL CITY

#### **"Smoldering Fire"**

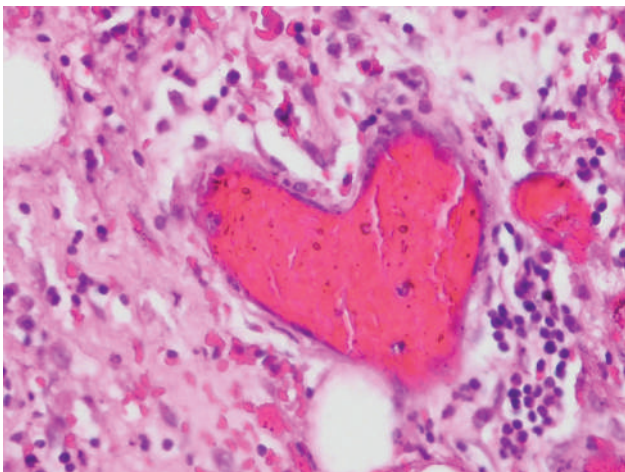
A burst of 'flames' of invasive breast carcinoma cells in HER2/neu FISH testing.  
Taken using BX41 Fluorescence Microscope - 40x objective.



### UERM

#### **"Blue Flowers"**

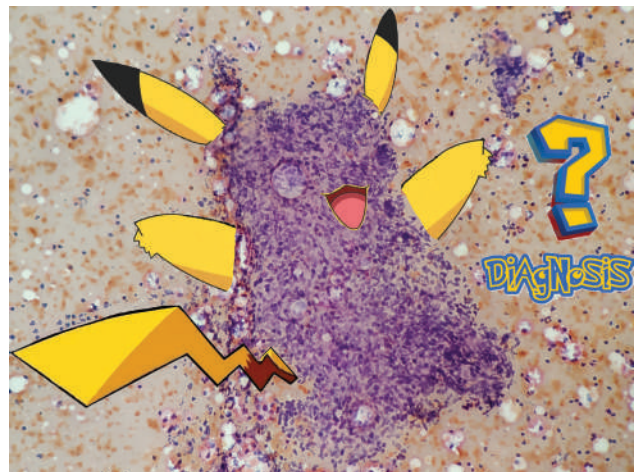
"There are always flowers for those who want to see them." - Henri Matisse



### VALENZUELA MEDICAL CENTER

#### **"My Heart Went OOPS"**

"There are times when our heart stops when we arrive at a grave diagnosis. But we make extra time for additional sections, and pour our hearts into what we do - all for our patients."  
Photo taken from an omentum, stained using Hematoxylin and Eosin.



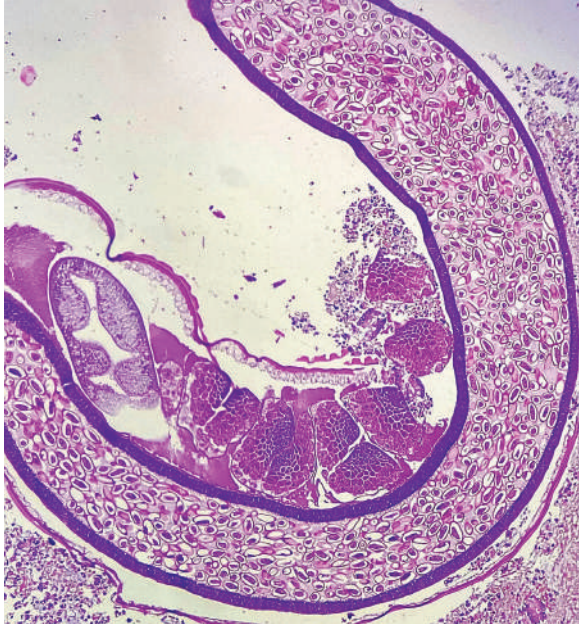
### ST. LUKE'S MEDICAL CENTER QUEZON CITY

#### **"TB or not TB, pick and choose"**

"A lung nodule, it manifests, And causes so much fuss,  
Epithelioid histiocytes, now can you guess?  
To get it right is a must! The other cells just look so bland,  
Necrosis cannot hide, Giant cells sometimes join the band,  
With Nuclei on the side! Granuloma!  
Gotta catch 'em all!"



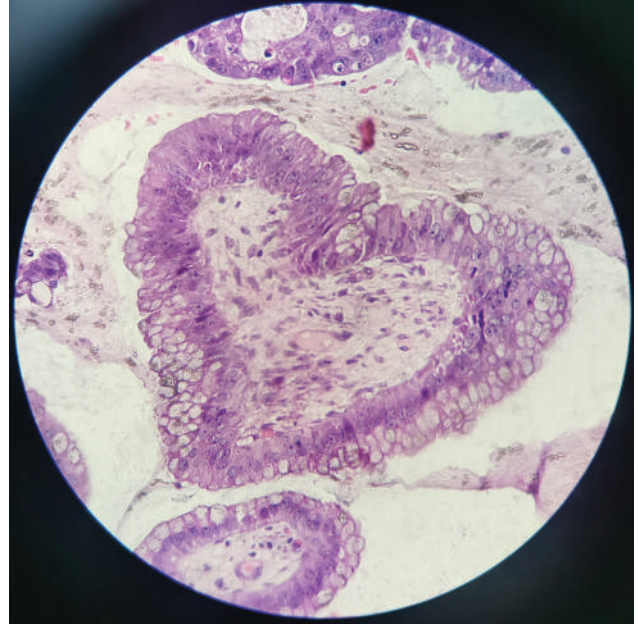
## INSTITUTION CATEGORY



**PHILIPPINE CHILDREN'S MEDICAL CENTER**

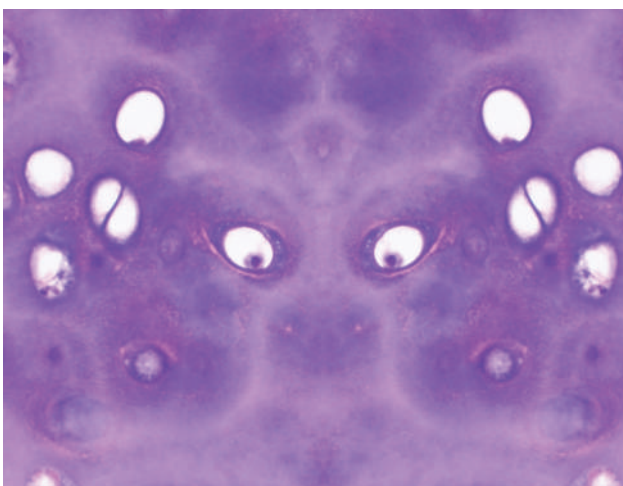
***"A Mother's Sacrifice"***

"A gravid Enterobius in full circle - within her is the ability to create, cultivate and transmute. A fascinating life that was cut short."



**FEU-NRMF**

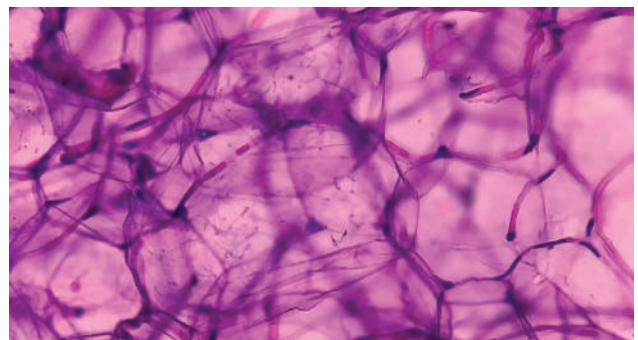
"Put your heart in everything you do. Sometimes you might lose it, but you'll find it if you look close enough in high power view." *Captured using an Olympus CX-33 (40x).*



**VICENTE SOTTO MEMORIAL MEDICAL CENTER**

***"Out there may be monsters, but in you there is a dragon"***

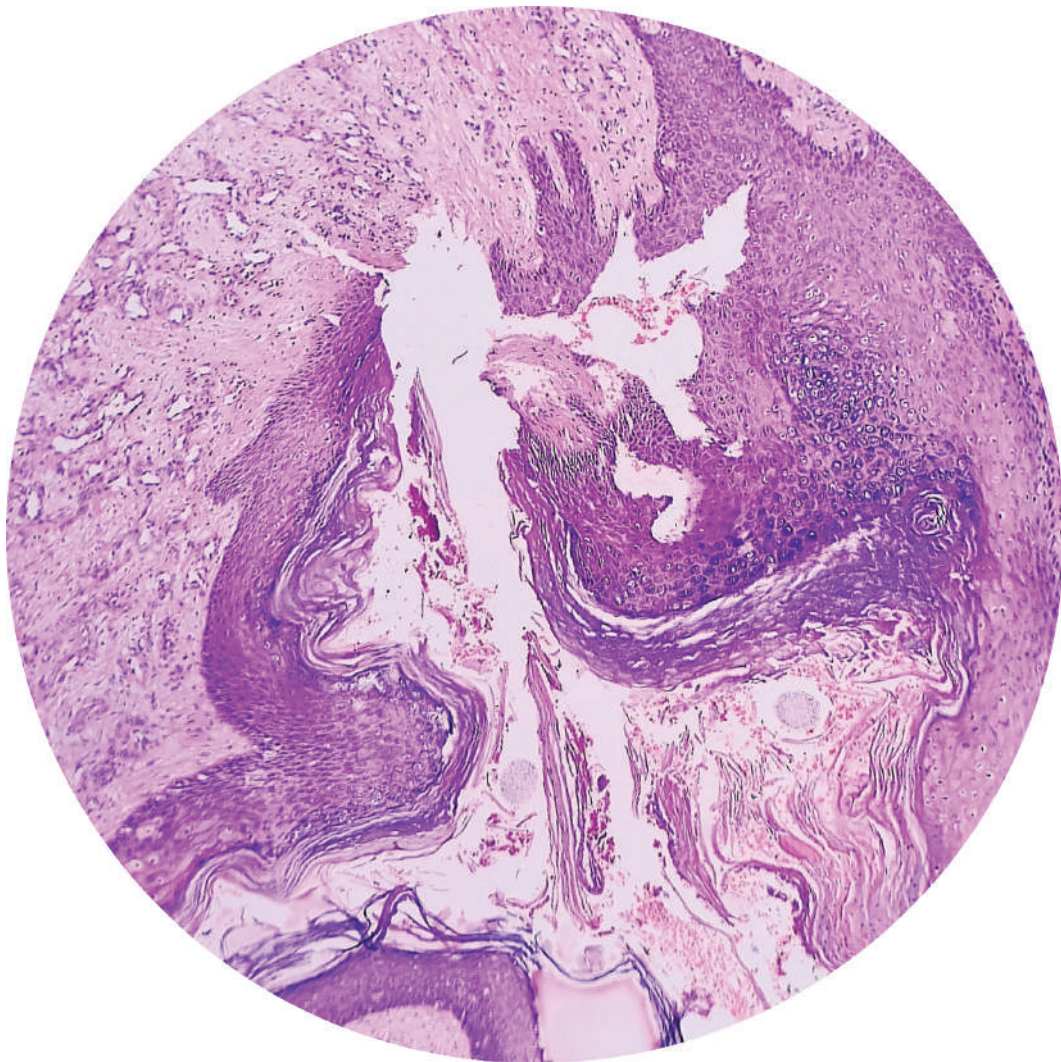
Benign Cartilage at 40x magnification. *This image is captured by cellSens Imaging Software through an installed Olympus DP74 camera on a CX33 Olympus microscope.*



**PHILIPPINE GENERAL HOSPITAL**

"I'm not empty and plain. I just need to be on the right.... stain." *Adipose tissue unfortunately taken from a fine needle aspiration biopsy of the thyroid. Captured using an iPhoneXMax using a Olympus CX23*

## INDIVIDUAL CATEGORY



### FIRST PLACE

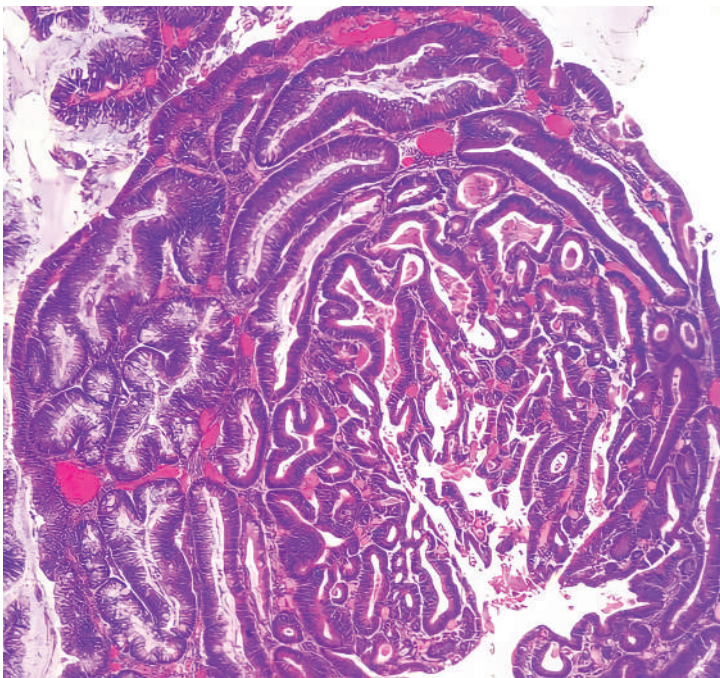
**SERREN LOR V. GALLINERO, MD**  
**(WESTERN VISAYAS MEDICAL CENTER)**

*"The Rise of the Phoenix"*

"Like a phoenix, prepare to be renewed after this period of crisis."



## INDIVIDUAL CATEGORY



### SECOND PLACE

**ANNA KATRINA M. DONATO  
(PHILIPPINE HEART CENTER)**

A photomicrograph showing a Well-Differentiated Adenocarcinoma of the Colon, mimicking the numerous convolutions of the brain. A reminder of the infinite capability of the human mind to continuously adapt and evolve scientifically through the modern times.  
*Captured using Olympus BX53, H&E stain, 100X magnification.*



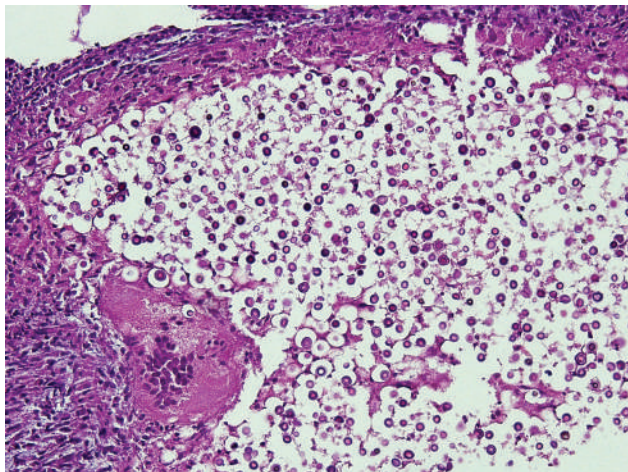
### THIRD PLACE

**JELA PATRICIA BANAYAT, MD  
(OSPITAL NG MAYNILA)**

""And no matter how dark the night gets, the sun will rise again."  
Thyroid cytology, 100x total magnification.



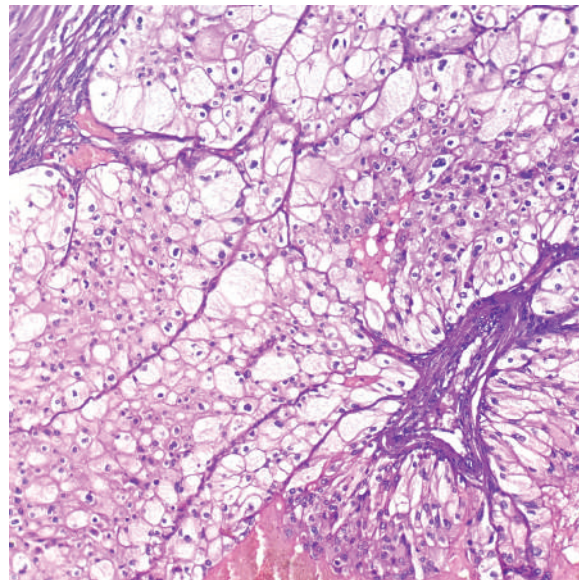
## INDIVIDUAL CATEGORY



**REBECCA R. NAGTALON**  
(ST. LUKE'S MEDICAL CENTER - GLOBAL CITY)

**"The Last Stand"**

"This brain's final response to these Cryptococcal invaders."  
*Captured using Olympus CX33 at 400x magnification*



**JANINE B. DALISAY, MD**  
(WESTERN VISAYAS MEDICAL CENTER)

**"Botanical"**

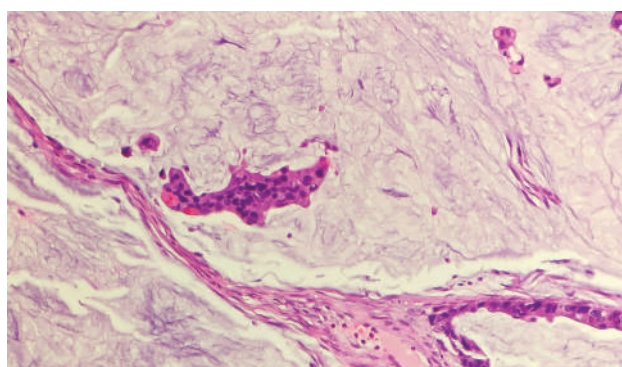
"Broad alveolar arrangement of the tumor with sharply defined borders and abundant cytoplasm with very prominent cell membranes reminiscent of our Botany days in this Classic ("Plant-like") Type of Chromophobe Renal Cell Carcinoma."  
*Captured using BX53 Olympus microscope at 400x magnification.*



**MA. PAULA ENGEDI M. DELMENDO**  
(ST. LUKE'S MEDICAL CENTER - QUEZON CITY)

**"Let's wipe that SMILE off your face (cervix)"**

"Stratified mucin-producing intraepithelial lesion (SMILE) is an unusual premalignant lesion best classified as a variant of adenocarcinoma in-situ (AIS). They are akin to Titans trying to breach the Wall and wreak havoc in the city. However, if they are seen early, immediate intervention (by the Garrison/ your physician) can prevent this." Cervical tissue with H&E stain.  
*Visualized with Olympus BX53 (x200), photographed with iPhone 11 Pro and background edited and drawn with GNU Image Manipulation Program.*



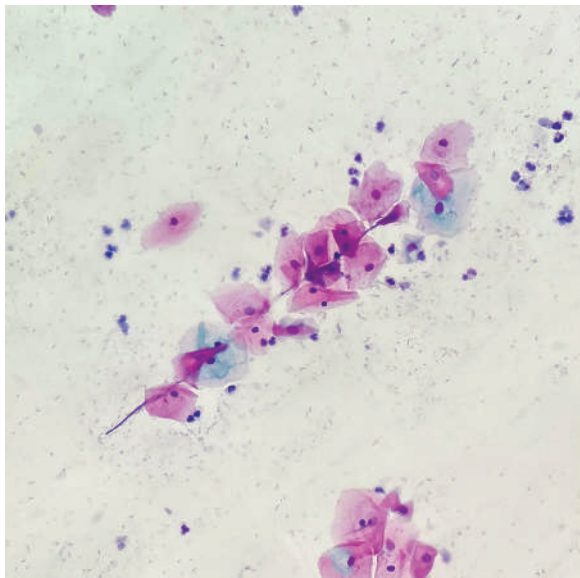
**JOSHUA T. UYBOCO**  
(ST. LUKE'S MEDICAL CENTER - QUEZON CITY)

**"Creature of the Night"**

"Swooping in on clouds of mucin, a cluster of tumor cells forms a silhouette of a bat! Is this nocturnal animal a dark omen, or a sign of a better tomorrow? A keen pathologist must understand the significance of these findings to determine the patient's prognosis."  
H&E stain, mucinous adenocarcinoma of the colon.  
*Captured on Olympus BX53 Microscope at 400x magnification.*



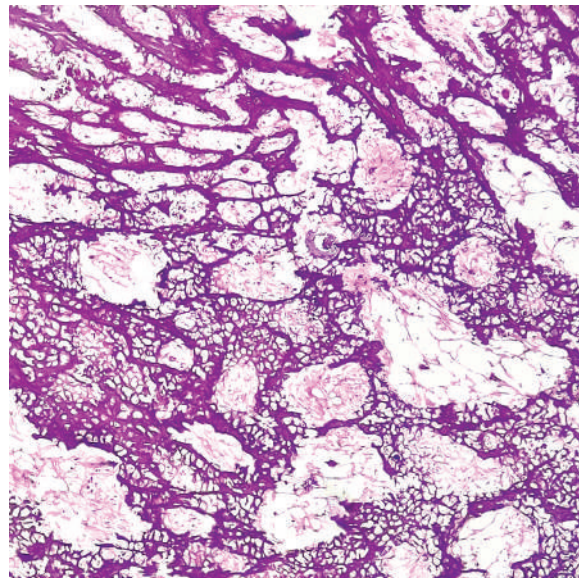
## INDIVIDUAL CATEGORY



**LEONNIE MAE G. GALLO**  
(WESTERN VISAYAS MEDICAL CENTER)

***"Minuscule Bouquet"***

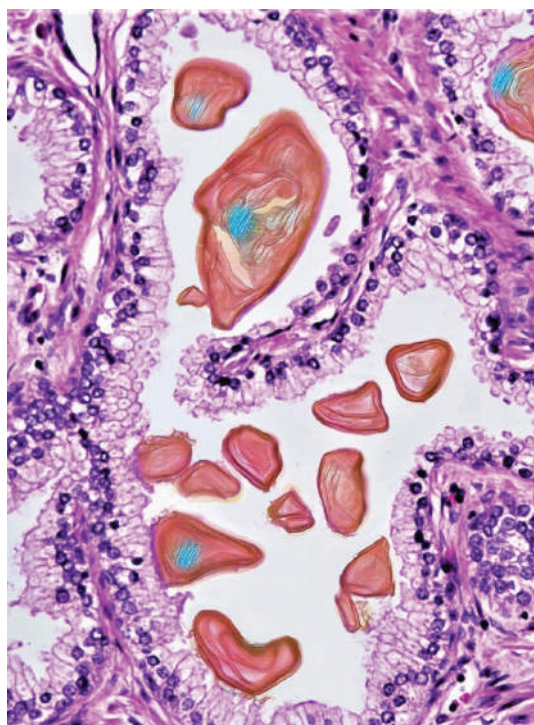
"Beads of squamous cells pierced by a string of fungal pseudohyphae reminiscing a bouquet of carnations seen lying in a field of bacteria and inflammatory cells."



**TERENCE MICHAEL M. NISMAL**  
(PHILIPPINE ORTHOPEDIC CENTER)

***"Favorable Necrosis"***

"Mineralized osteoid matrix which remained after neoadjuvant chemotherapy for a conventional osteosarcoma. This marks areas previously inhabited by malignant cells which is now replaced by an amorphous stromal material. Survival advantage is seen in patients with tumors that show >90% necrosis after neoadjuvant chemotherapy. Always report tumor histologic response in these cases."



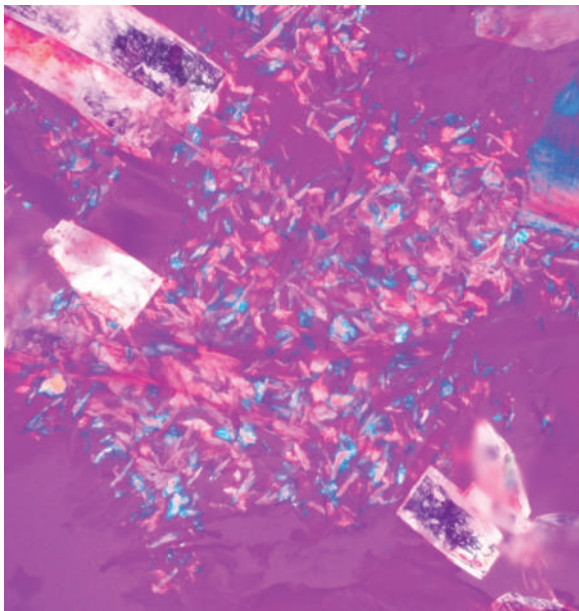
**ARIAM O. GATPO**  
(ST. LUKE'S MEDICAL CENTER- QUEZON CITY)

***"Benign Hearty Prostate"***

"This photomicrograph show benign prostate glands secretions composed of concentric lamellar rings called corpora amylacea. Improving cardiovascular risk lowers, one's odds of developing prostate problems. Regular exercise and weight loss reduces prostate cancer risk. Red-meat free diet significantly improves prostate health and cardiovascular health. Being "heart-healthy" promotes a healthy prostate."  
*Captured using OLYMPUS BX51, at 20X objective photographed with OLYMPUS DP70, corpora amylacea enhanced using LunaPic.*



**INDIVIDUAL CATEGORY**

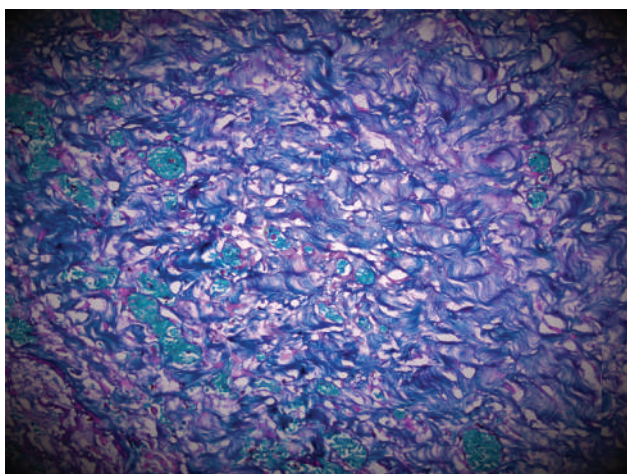


**JOSA PINOL**  
(ST. LUKE'S MEDICAL CENTER, QUEZON CITY)

**"Take a Trip"**

"Psychedelic crystals blast off on a spectrum of vivid brights right into the 80's inspired galaxy of tophaceous gout."

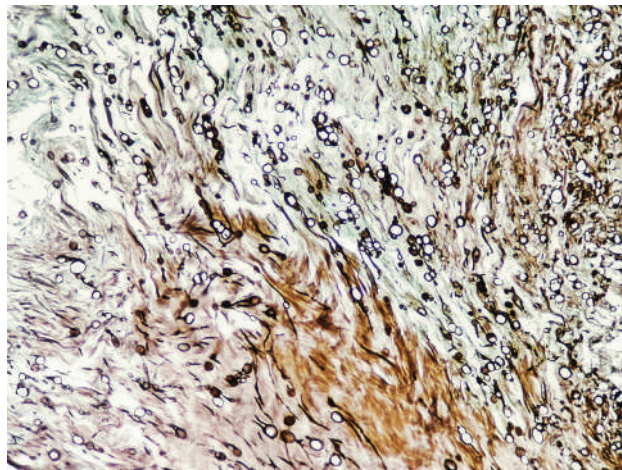
*Captured with Olympus BX53 light microscope at 100x (low power objective) magnification.*



**GLENN NATHANIEL S.D. VALLOSO, MD**  
(PHILIPPINE HEART CENTER)

**"Lucid dreams need only three colors."**

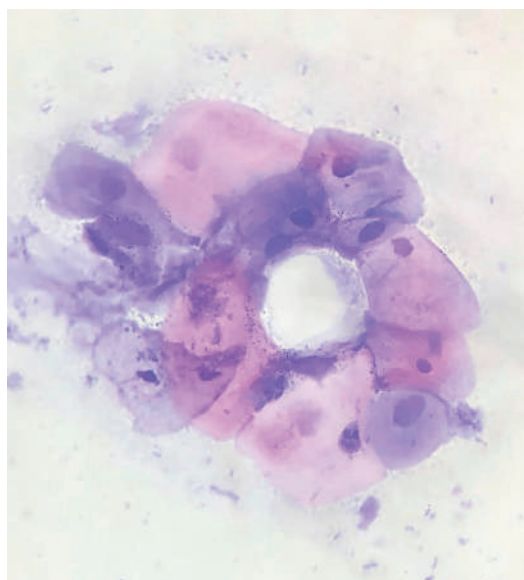
*Captured using Olympus DP22.*



**KATHRINA ASEANNE C. ACAPULCO**  
(PERPETUAL SUCCOUR HOSPITAL)

**"AspARTgilloma"**

"Accidentally discovered abstract art in disease upon staining with Grocott-Gomori Methenamine Stain. Sections disclosed hyphae, sporangia, and sporangiospores in a granulomatous lesion derived from a "lung mass" specimen."



**RAY V. OLAC, JR., MD**  
(WEST VISAYAS STATE UNIVERSITY  
MEDICAL CENTER)

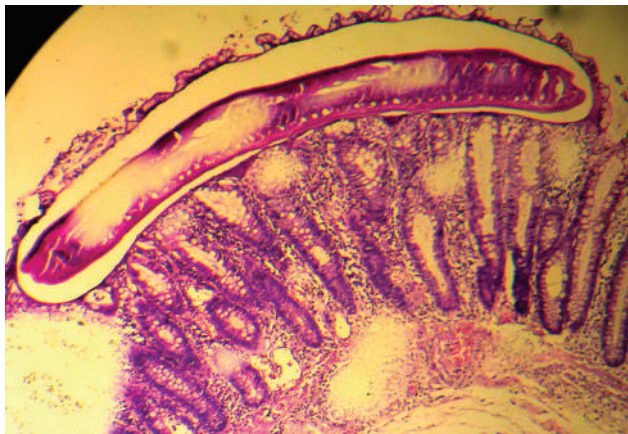
**"Cervical Rosette"**

"Mirroring the shadows of adornments past,  
Whose sires and maidens deem to last.  
Finite to thought and deeply beset,  
The once glory of eminent rosette."

A rosette of cervical epithelium in a routine Pap smear is seen. A true "lumen" is appreciated where the cells themselves surround a central hollow point.

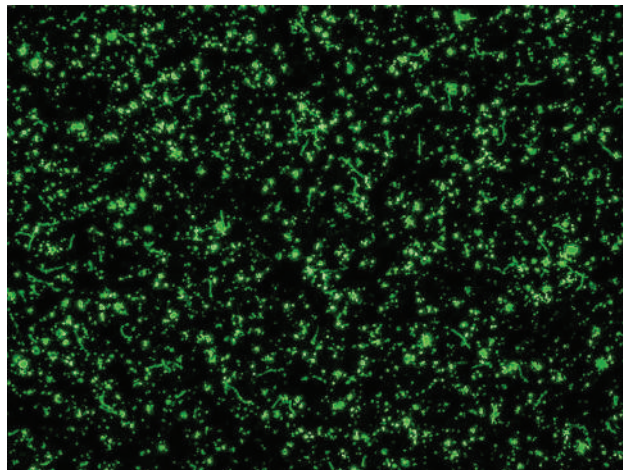


## INDIVIDUAL CATEGORY



**REDEN A. PATALINJUG, MD**  
(VICENTE SOTTO MEMORIAL MEDICAL CENTER)

"I came discreetly, I crept stealthily. I whipped gently, and you prollapsed excruciatingly." -Trichuris trichiura.  
*Captured using an Olympus cx23, LPO.*



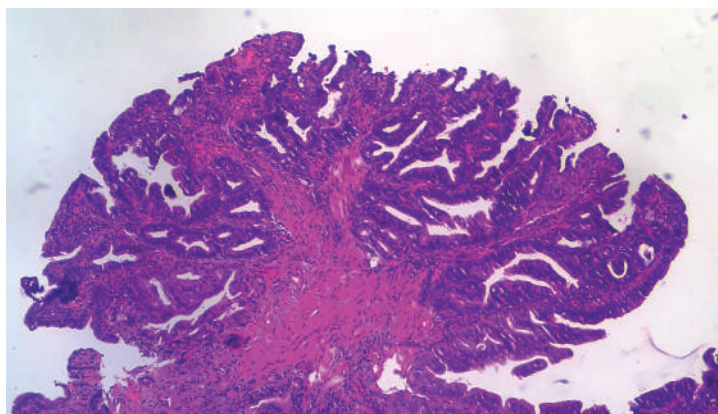
**DAVID JEROME ONG, MD, MBA**  
(THE MEDICAL CITY)

**"A Spiral Night"**  
"A bright sky filled with green fluorescent spirochetes and other debris." This specimen is positive for spirochetes (T. pallidum) in FTA-ABS.  
*Captured using Olympus BX41 - 40x objective.*



**KATRINA INOFERIO**  
(THE MEDICAL CITY)

**"Tree of Life"**  
"Rise up and stand firm against adversity. Remain steadfast and you shall live."  
Borderline serous tumor (H&E).  
*Captured using Olympus BX43 - 10x objective.*

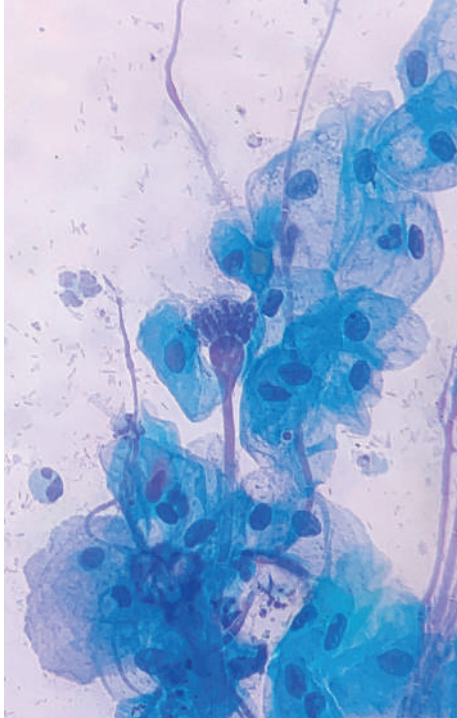


**VICTORIA E. CRUZ, MD**  
(UERM)

**"The Tree of Love"**  
"For love is like a tree; it grows of itself; it sends its roots deep into our being, and often continues to grow green over a heart in ruins." - Victor Hugo

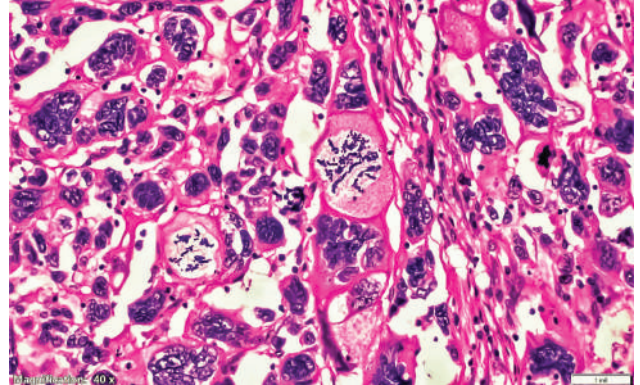


## INDIVIDUAL CATEGORY



**BLESSING DILLA**  
(WEST VISAYAS STATE UNIVERSITY  
MEDICAL CENTER)

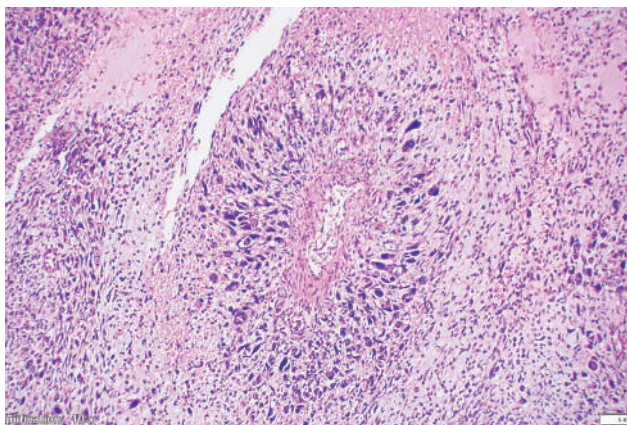
"A queen with a crown of pearls or a beautiful blue flower in spring. Preserved forever as she sits idly with time's passing."



**LOVELY EDIZA W. DOLLOSA**  
(VICENTE SOTTO MEMORIAL MEDICAL CENTER)

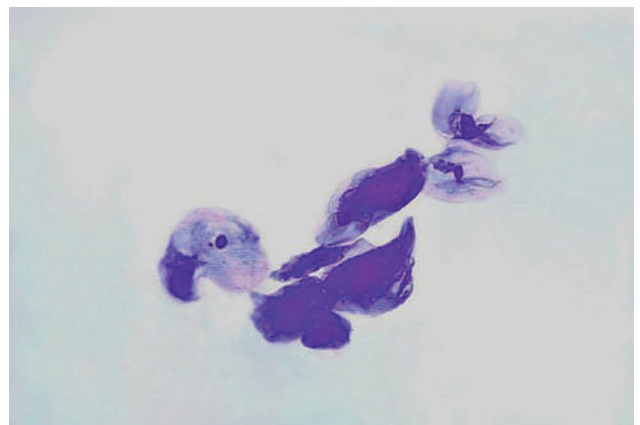
**"Mother and Daughter Sticks Together"**

*Captured using Olympus CX33 with attached DP74 Olympus Camera.*



**ALEXIS J. ARCENAS-AMOROSO**  
(VICENTE SOTTO MEMORIAL MEDICAL CENTER)

**"My Crown of Tumor Cells"**  
40x magnification.



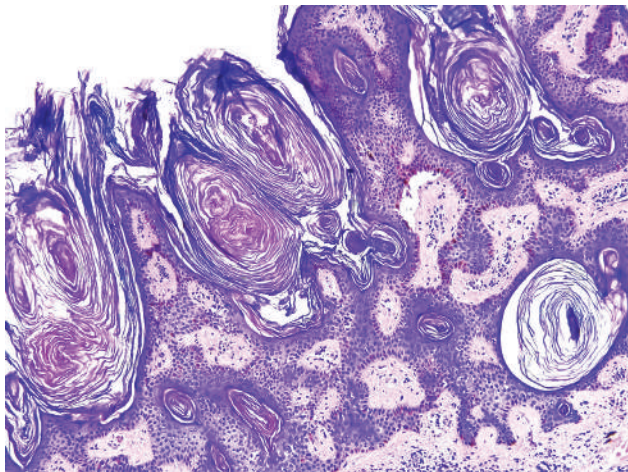
**JULIAN MARIE AGAPE M. GRAGEDA, MD**  
(VALENZUELA MEDICAL CENTER)

**"Dreams of Flight"**

"It was in pre-residency when this happy coincidence came by in a routine pap smear (December 2019). I hope we'd all be as free as this bird as soon as this pandemic ends."



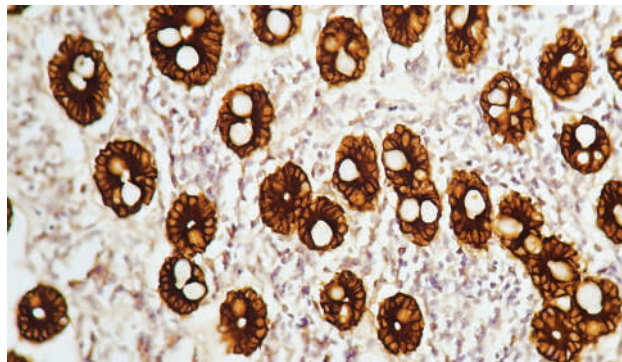
## INDIVIDUAL CATEGORY



**ANNA THERESE R. DATUIN  
(BAGUIO GENERAL HOSPITAL AND  
MEDICAL CENTER)**

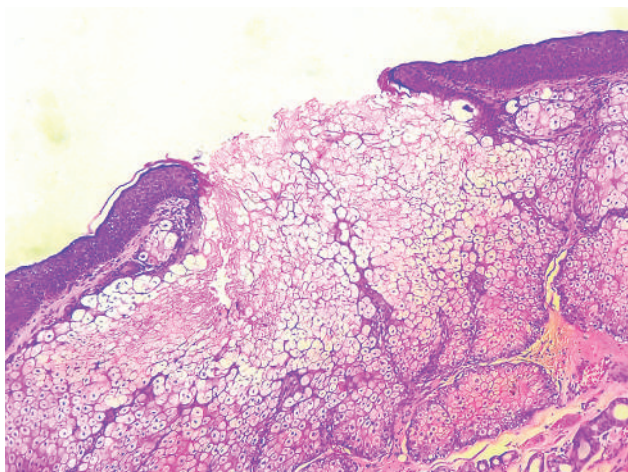
**"Quartz"**

"Like geodes with layers and layers of crystals, horn pseudocysts found in Seborrheic Keratosis are made of loose swirls of delicate acellular keratin."



**KAMILLE DELA CRUZ  
(QUIRINO MEMORIAL MEDICAL CENTER)**

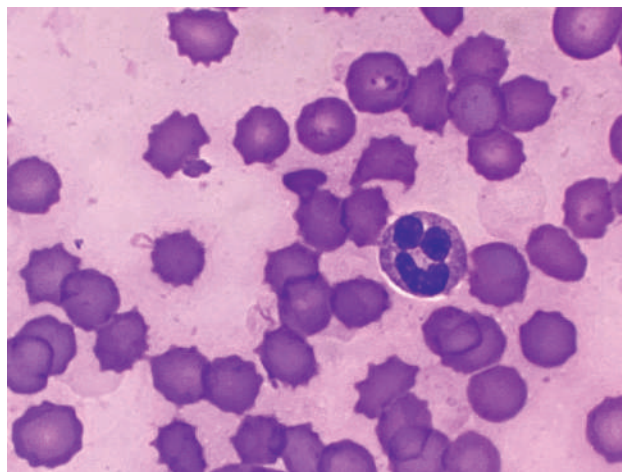
**"With Great Power, Comes Great Responsibility"**  
*Captured using Olympus CX21LED, x400.*



**MA. REENA H. RANARIO, MD  
(EASTERN VISAYAS REGIONAL  
MEDICAL CENTER)**

**"A Volcano within a Tumor"**

Astonishing eruption of the sebaceous glands to the epidermis from a Mature Teratoma of the Ovary.

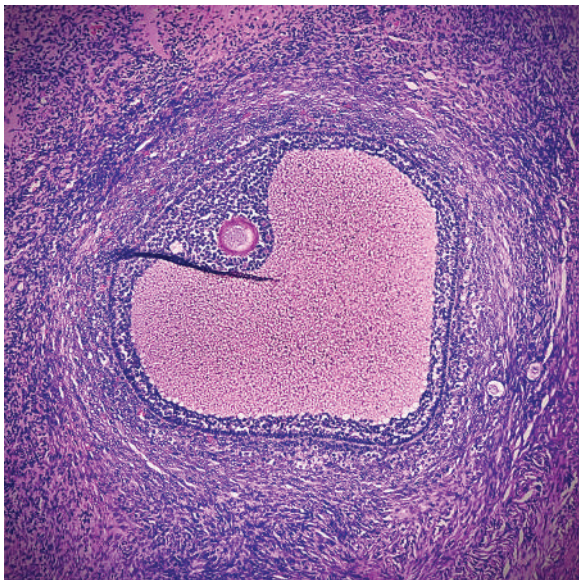


**CHINO PAOLO M. SAMSON  
(REGION 1 MEDICAL CENTER)**

"There are many reasons to be wearisome during this pandemic; but this photo of a blood smear from a patient with COVID-19 reminds us that even the tiniest cells in our body are not giving up – and neither should we. Dear Frontliners (Macro and microscopic), continue fighting with a smile!"



## INDIVIDUAL CATEGORY



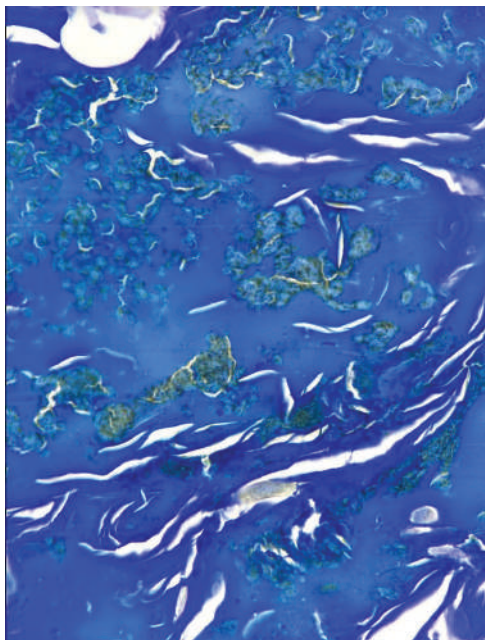
**JOEANNE MARIE M. SALISE  
(UP-PHILIPPINE GENERAL HOSPITAL)**

"Beauty found in a seemingly unremarkable ovary, a pleasant sight to behold during a time of uncertainty."  
*Image captured using Olympus CX23 and Iphone 12 Pro Max.*



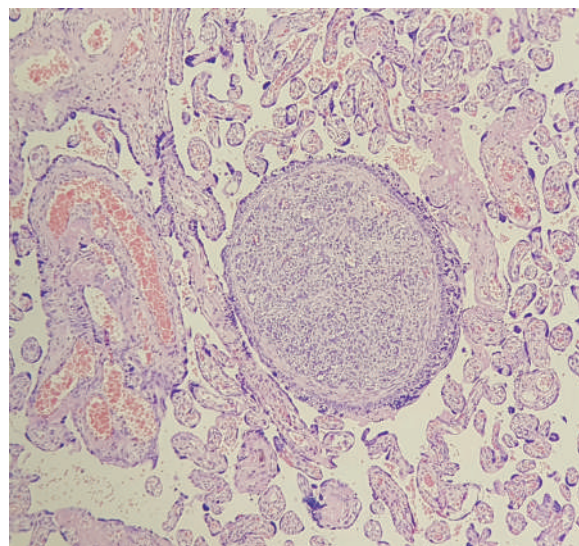
**ZOE PHYLLIS C. CARPISO, MD  
(FEU-NRMF)**

"Frustrations. Me, after one year of being in a pandemic. Two arteries and one vein of an umbilical cord cross section."



**JOSEPH MICHAEL R. ESPIRITU  
(BULACAN MEDICAL CENTER)**

This is a rare case of cutaneous histoplasmosis from an HIV-AIDS patient referred to our institution. Just imagine yourself looking outside the window of an airplane. We all miss this. Visualize the Histoplasma as islands surrounded by the deep blue sea, as depicted by the Giemsa stain.

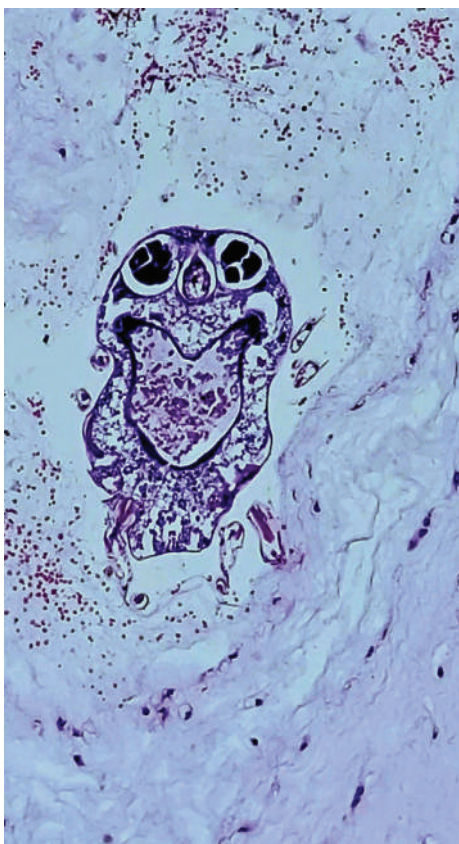


**JAN ROMAN M. AYCO  
(PHILIPPINE CHILDREN'S MEDICAL CENTER)**

**"The Seed of Destiny"**  
"Deep in the placenta I await,  
brought forth by maladies of old mother.  
The fate of the pregnancy at stake,  
to grow forth or regress this I ponder."  
A photomicrograph of a chorangioma occurring in a placenta of an elderly primigravid with history of diabetes mellitus and hypertension.

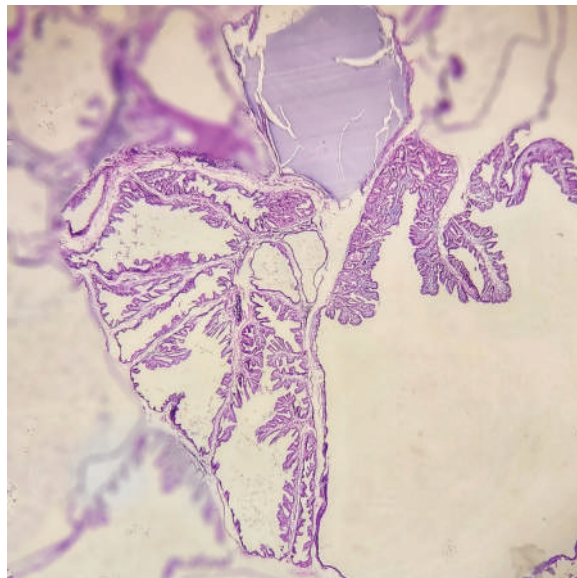


## INDIVIDUAL CATEGORY



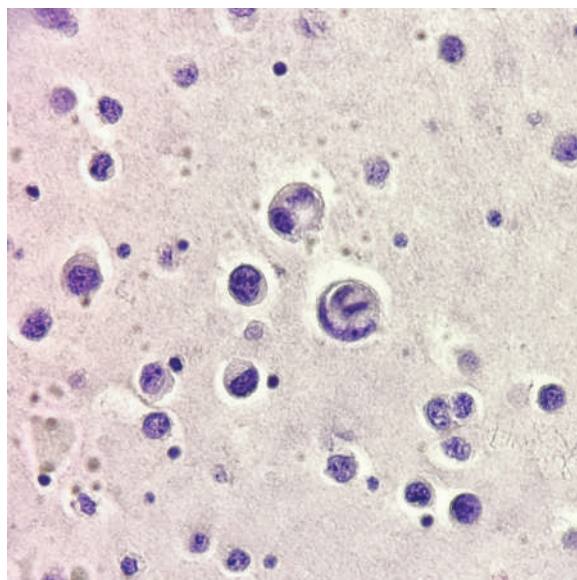
**RAQUEL P. NGOHO**  
(EASTERN VISAYAS REGIONAL  
MEDICAL CENTER)

"Hey, if you don't have a smile,  
I'll give you one of mine!"  
An image captured using a light  
microscope from an extraplacental  
membrane, magnified 100x.



**JILL J. JAIME**  
(PHILIPPINE CHILDREN'S MEDICAL CENTER)

**"The Mundane and the Divine"**  
We embrace the mundane, Lest there's nothing beyond.  
In hidden patterns we turn, To catch a glimpse of the divine.  
*Scanning view; iris blur via Adobe Photoshop CS6.*



**JOAN MARIE INFANTE**  
(FEU-NRMF)

**"The Nightmare Before Christmas."**  
An atypical cell seen in a pleural fluid cytology smear.

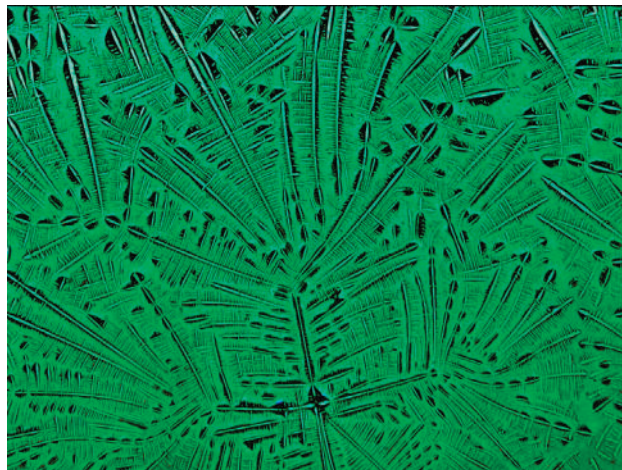
## INDIVIDUAL CATEGORY



**JOAN MARIZ T. PUNSALAN  
(JOSE B. LINGAD MEMORIAL  
GENERAL HOSPITAL)**

***"Midnight Sun"***

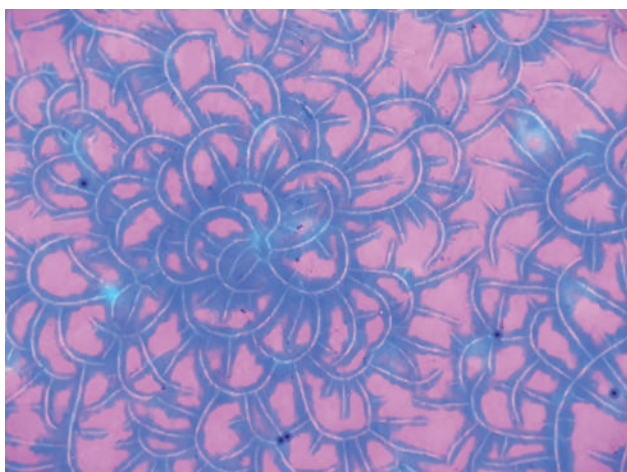
"Be the light in someone's hopeless night  
For all great beginnings start in the dark."  
(Fecal Material with Schistosoma ovas in an  
Appendectomy Specimen at 40x magnification).



**KATRINA JEZZELA M. DELA PENA  
(JOSE B. LINGAD MEMORIAL  
GENERAL HOSPITAL)**

***"Breathe Easy"***

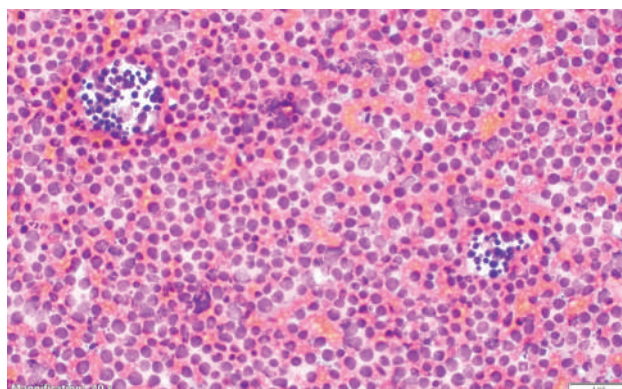
Salt in the air, Breeze in the sea  
How wonderful would it be, If trees can grow in the city.  
(Pleural fluid cytology at 40x magnification).



**LIAA MARIE G. DIMACALI  
(JOSE B. LINGAD MEMORIAL  
GENERAL HOSPITAL)**

***"Today too, I Bloom"***

Today too, I face my fears. Today too, I learned mistakes.  
But today too, I move forward at my own pace.  
And today too, I grow and bloom with grace.  
(Pleural fluid aspirate at 40x magnification.)



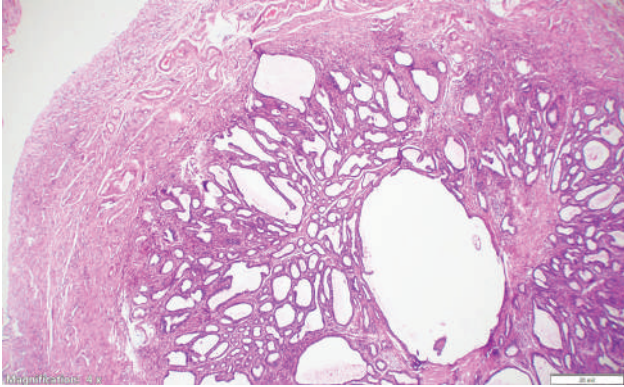
**DAPHNE MARIE BORROMELO  
(VICENTE SOTTO MEMORIAL MEDICAL CENTER)**

***"Two Galaxies amidst the Sea of Stars"***

This is a taken from a Fine Needle Aspiration Cytology  
of a Submandibular Mass. 40x Magnification.  
*The image is captured by cellSens Imaging  
Software through an installed Olympus DP74  
camera on a CX33 Olympus microscope.*

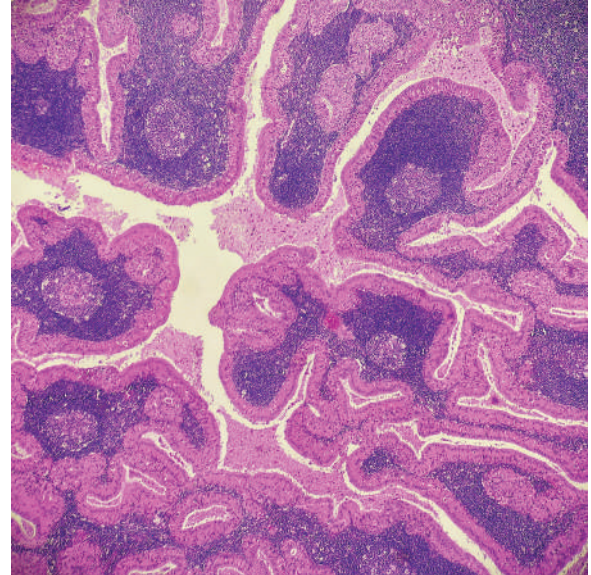


## INDIVIDUAL CATEGORY



**JOSEPH GARY C. SANCHEZ JR.**

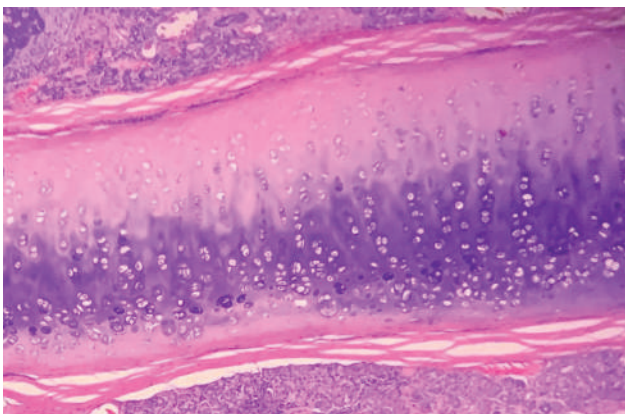
Don't underestimate the fallopian tube:  
a case of salpingitis isthmica nodosa.



**EUNICE DANICA FE  
(JOSE B. LINGAD MEMORIAL  
GENERAL HOSPITAL)**

*"Who Am I?"*

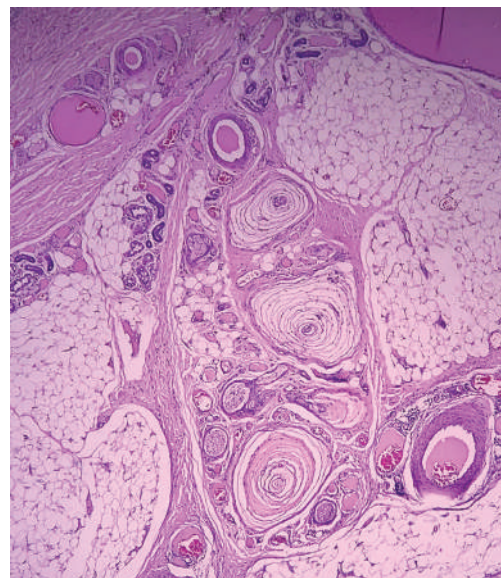
"Let smoke kiss your lips, I'll grow beneath your cheeks.  
Bigger than pears, I come from the tissue of defenders."  
(Warthin's tumor at 10x magnification).



**SANDY MAGANITO  
(PHILIPPINE GENERAL HOSPITAL)**

*"The Ripening"*

"Isn't it odd? We tend to lose our potential as we  
mature." Cartilage maturation of the nasal septum.  
Captured using an iPhoneXMax using a Olympus CX23.



**CECILE DUNGOG  
(PHILIPPINE GENERAL HOSPITAL)**

*"Come here, let me feel you no more"*

Bundles of Pacinian corpuscle from an amputated hand.