



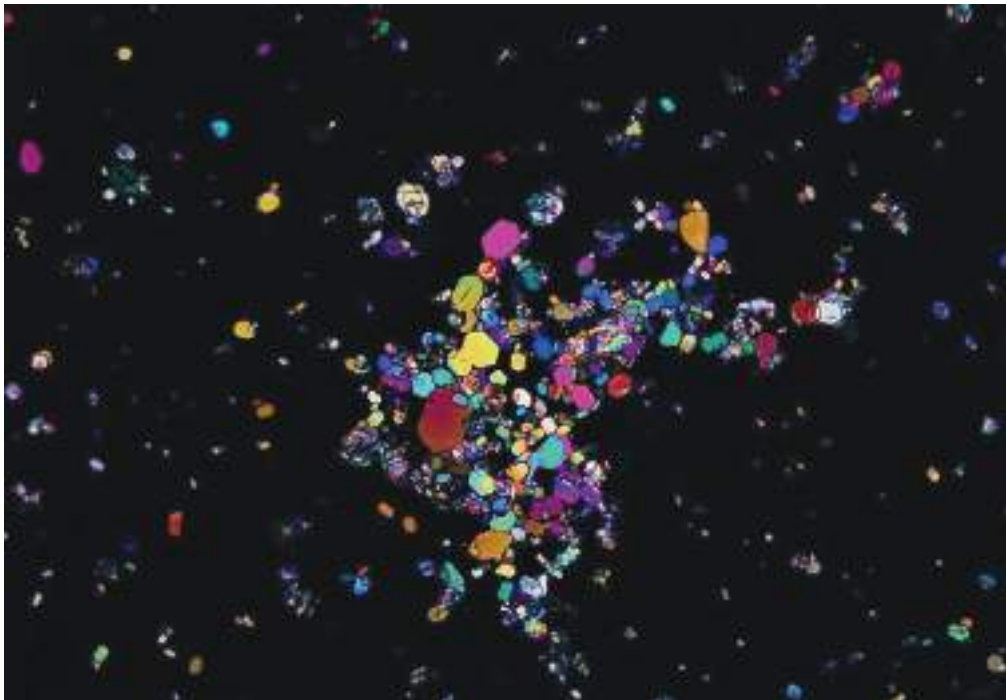
PSP

PRO PHOTOMICROSCOPY CONTEST 2018



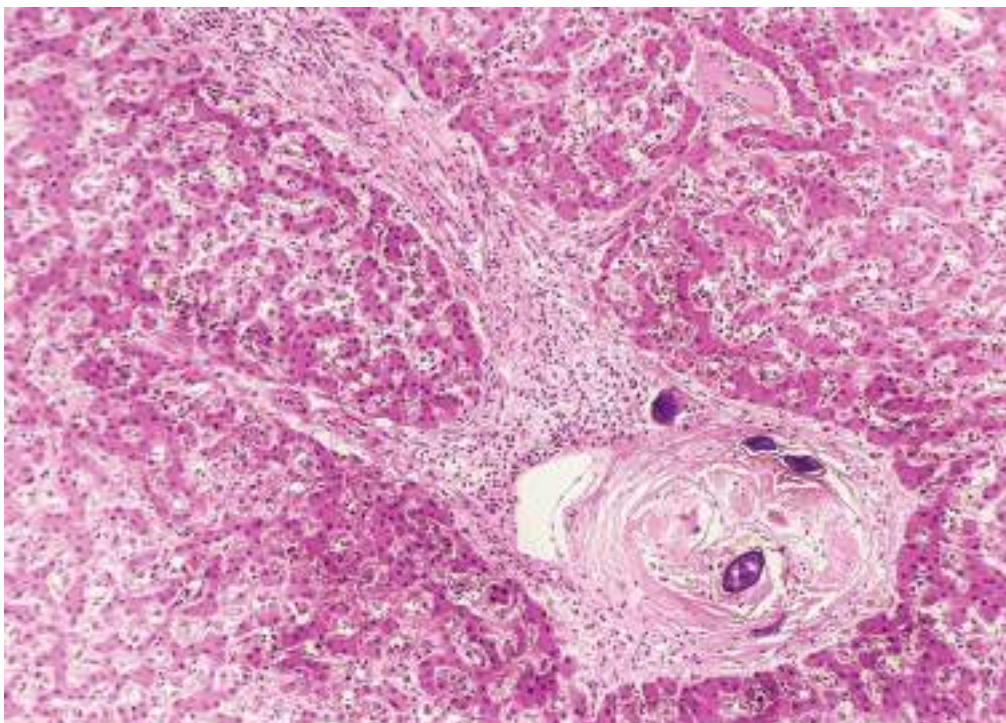
OMNIBUS

BIO-MEDICAL SYSTEMS, INC.



MARK JASON G. ORDENES

Urine, Total magnification used: 400x and 100x
Case of a 2-year-old male with a complaint of painful urination.

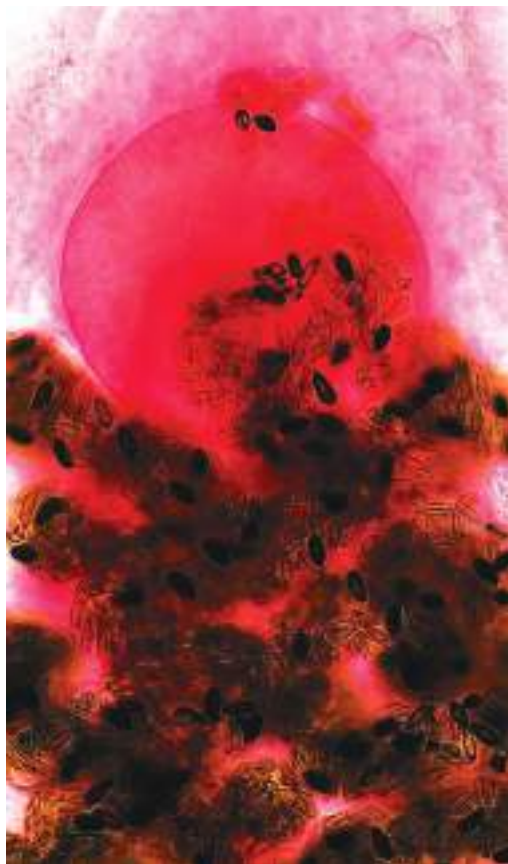


SECOND PLACE

THADDEUS C. HINUNANGAN

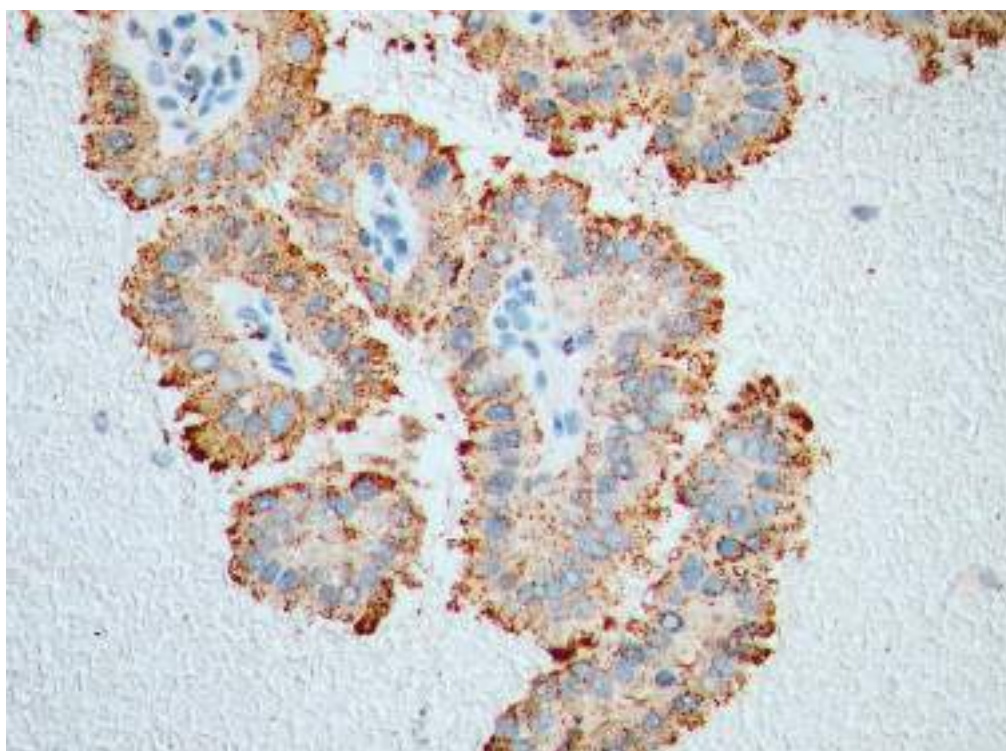
"LAST EXIT TO LEYTE"

A 22-year-old male dies of pneumonia, but an autopsy revealed *Schistosoma japonicum* ova, inducing pipe stem fibrosis in the liver. The young man may have passed, but this undeniable reminder of a neglected tropical disease remains.



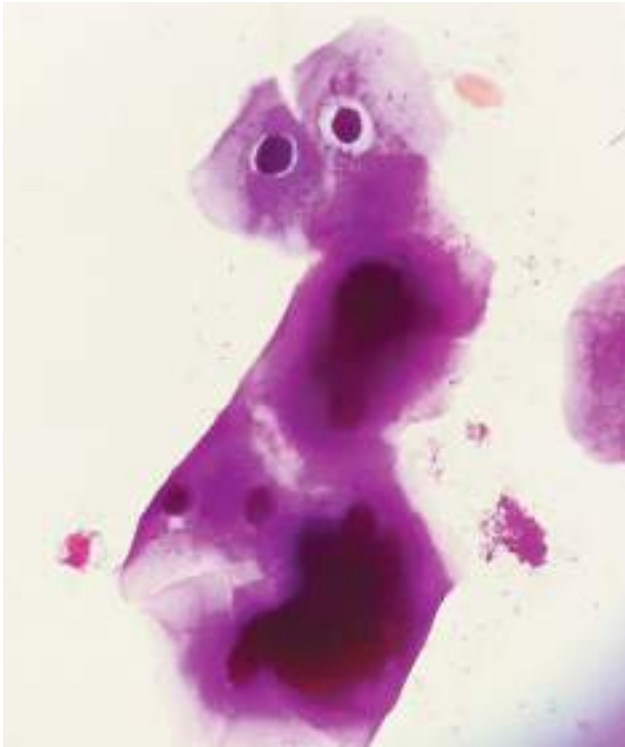
FAYE VICTORIA A. DE LOS REYES

This photomicrograph depicts the ventral sucker and part of the uterus of the *Clonorchis sinensis*. The numerous eggs shown is a reminder of the burden of disease in East and Southeast Asia that is caused by this organism despite being only 2.5 cm in its full adult size.



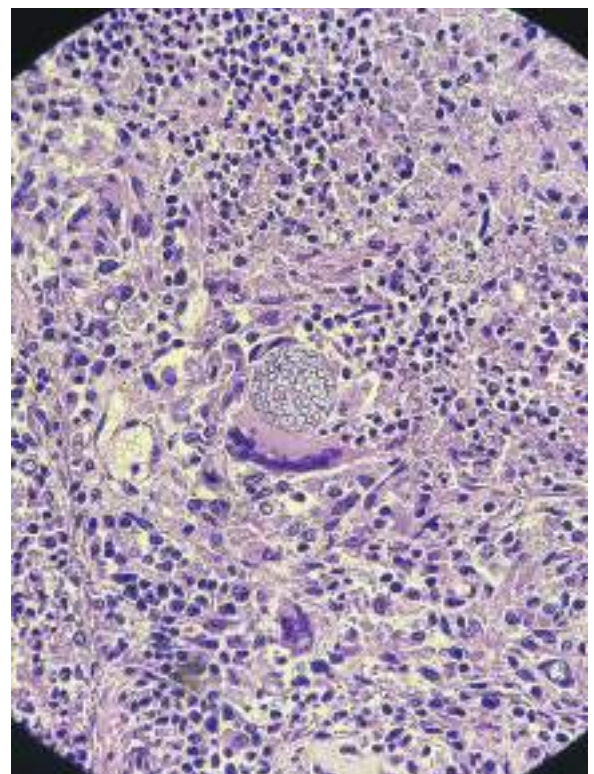
MARIA CECILIA M. DAÑGUILAN

Fine-needle aspiration biopsy of a pulmonary mass showed papillae lined by columnar cells with nuclear grooves and pseudoinclusions resembling papillary thyroid carcinoma. Granular cytoplasmic staining with Napsin A is seen in tumor cells exhibiting prominent nuclear pseudoinclusions.



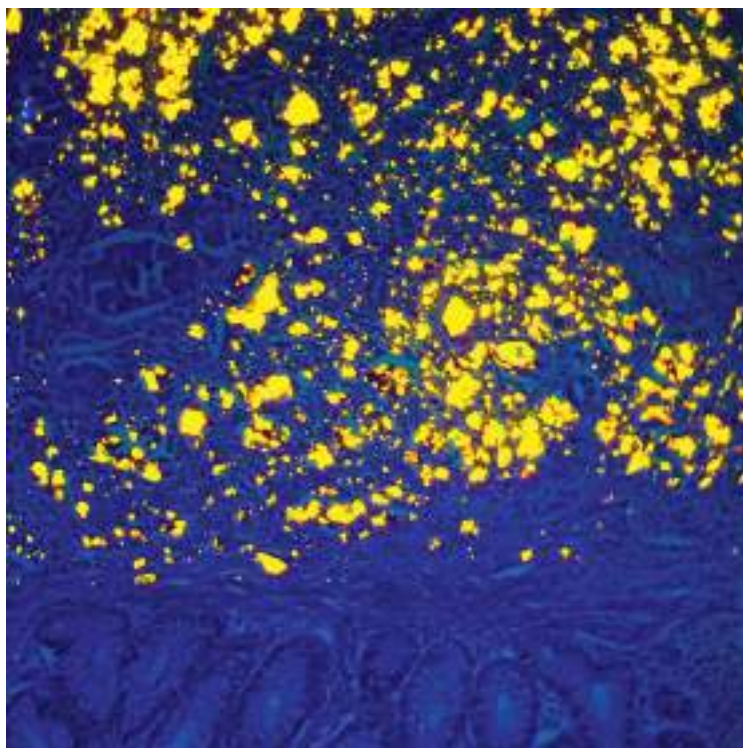
RUBY O. RUSIA-UY

Gram stain of cervicovaginal smear
What am I? It depends...
To a kid, a teddy bear.
To an animal lover, a koala or a tarsier.
To a parasitologist, a scolex.
To a mystery hunter, an ET or an alien.
What do you think am I?
Just a bunch of squamous epithelial cells,
says a pathologist.



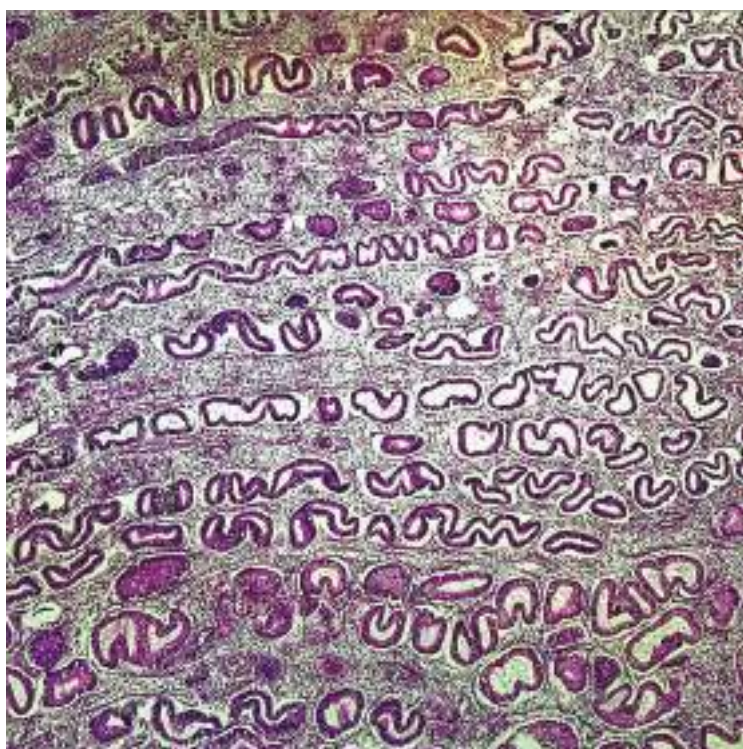
LOUIS ALVIN MARANAN

Incidental finding on a section of lung tissue
exhibiting a *Coccidioides immitis* spherule
within a multinucleated giant cell.



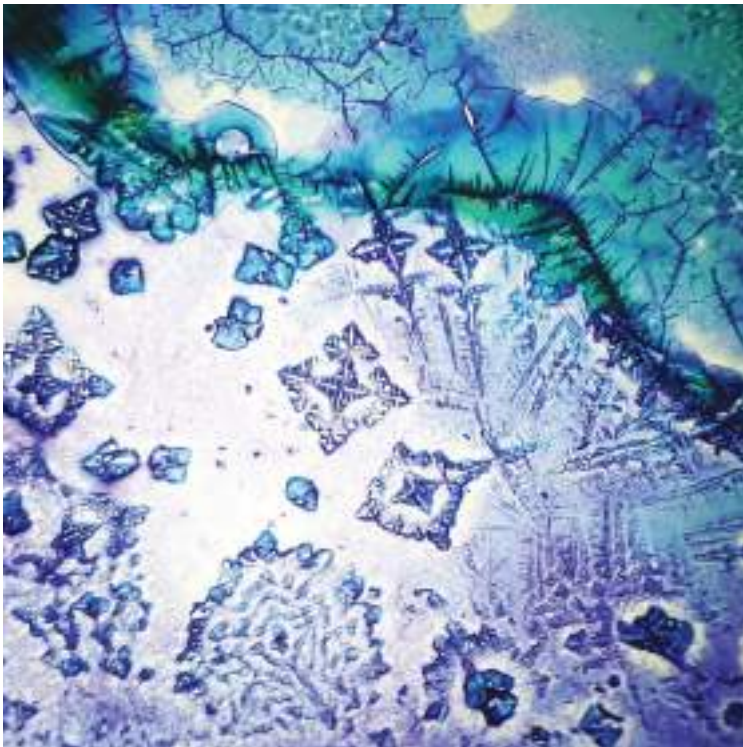
RANDELL S. ARIAS
"VAN GOGH"

Bright yellow flecks of hematoidin cysts are strewn across this colonic wall in a patient with aortoenteric fistula redolent of a madman/genius post-impressionist painter's most iconic work 'The Starry Night'.



PHILIP TEOMAR A. RADIN II

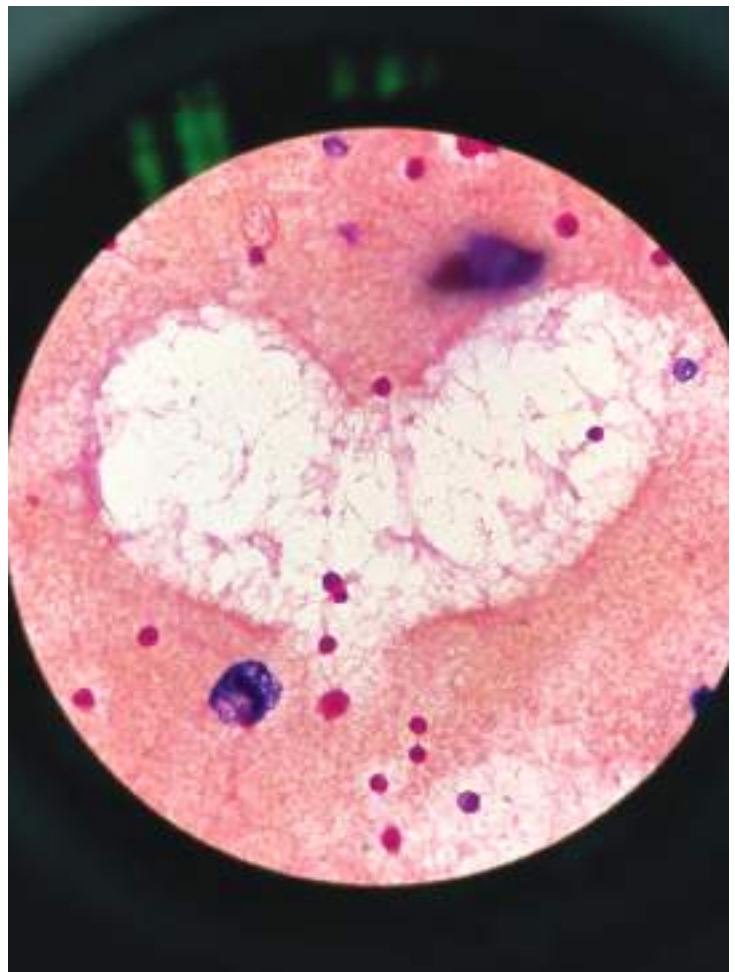
The picture depicts an endometrial tissue in secretory phase composed of layers of long, tortuous to serrated glands looking like gummy worms, lined by cells with short rounded nuclei with some subnuclear vacuoles and intraluminal secretions. These are supported by a fairly loose stroma.

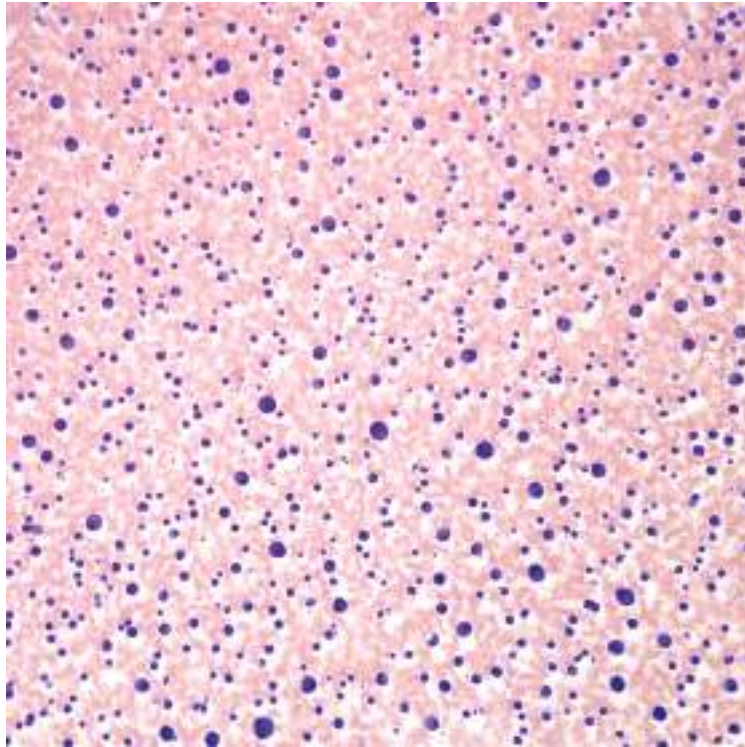


FRANZ JOBERT L. SEBASTIAN

This image depicts crystals from a parotid cyst smear.

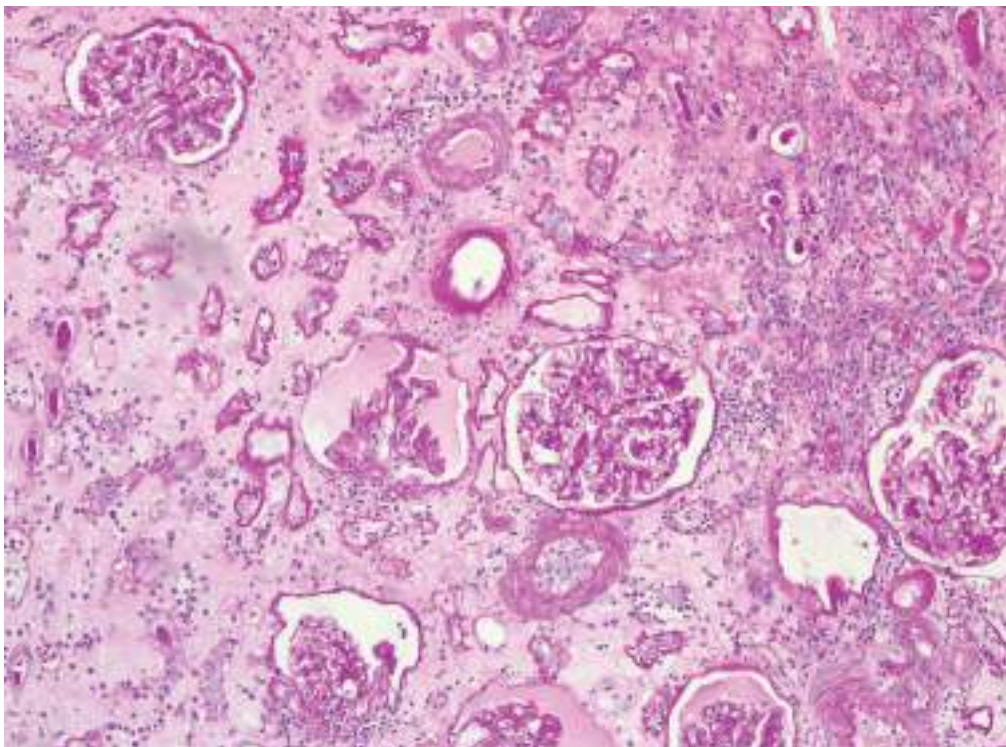
EVELINA N. LAGAMAYO
"A HEART DOWN ON ITS KNEES"
What a big surprise when on Valentine's Day! I saw this heart-shaped image from a gram stain of synovial fluid knee aspirate from an arthritic patient. I went home with a happy heart because I see love even at work





OTHANIEL PHILIP R. BALISAN
"PURPLE RAIN"

These cytological smear shows a flurry of purple 'blobs' or benign mesothelial cells which is a usual diagnostic stumbling block for the uninitiated.



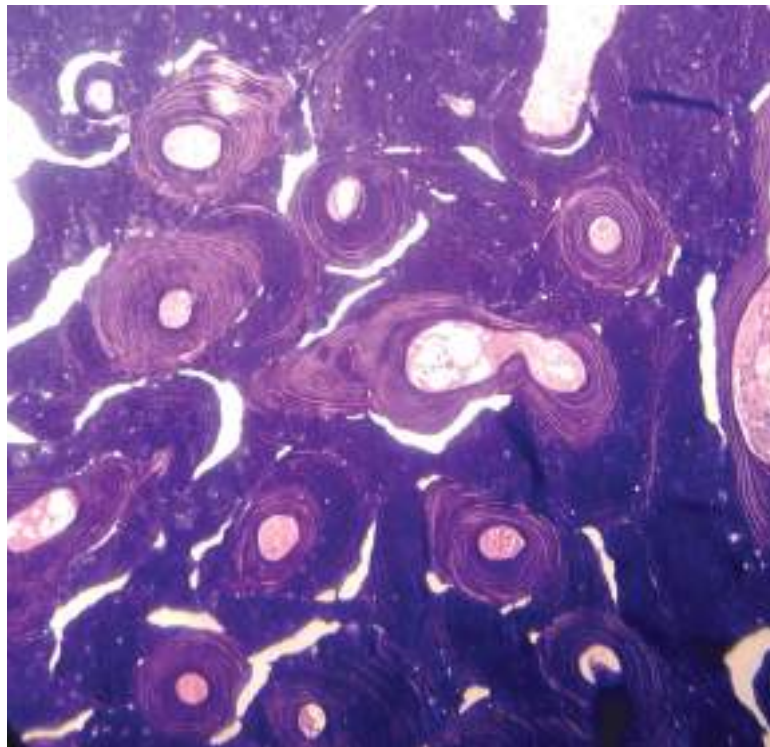
AARON PIERRE P. CALIMAG
"KAPIT LANG"

This photo is from a renal allograft with acute T-cell mediated rejection with a chronic active component. There are areas of inflammation, sclerosis, and hemorrhage. It shows that despite how everything else falls apart around you, you still manage to muster the strength to hold on.



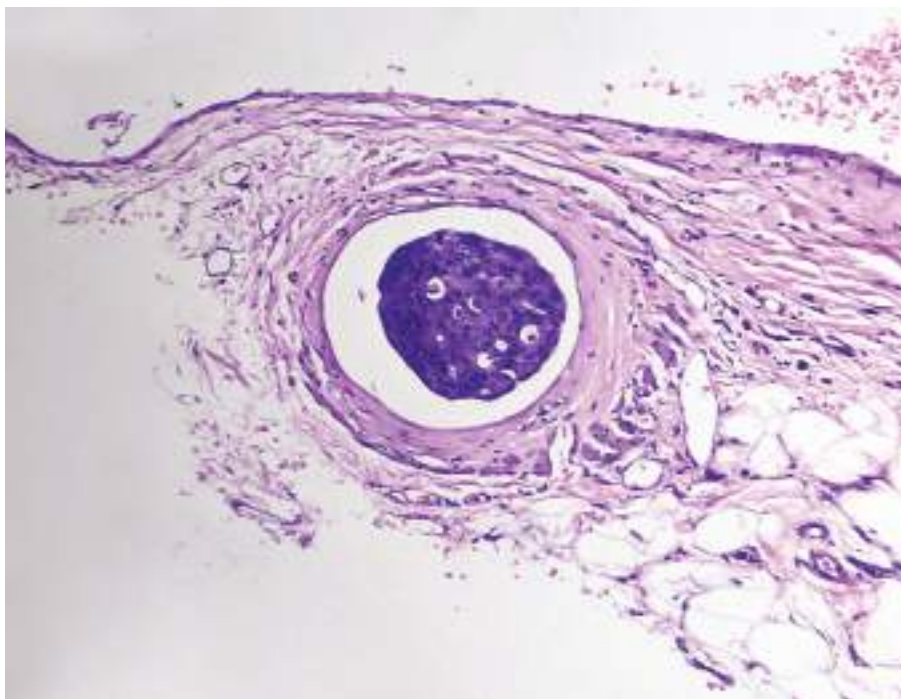
CHRISTOPHER ALEC A. MAQUILING
"BEWARE OF FAKE NEWS"

This is a photomicrograph (40x magnification) of a worm taken from a stool sample from an adult male that was initially suspected as a parasite. On further investigation, it turned out to be a larvae of drain flies (Order: Diptera, Family: Psychodidae) that bred in his toilet bowl. Fake (and very fortunate) news, indeed.



WALDEMAR SIY

A microscopic sneak peak of the universe, of its countless galaxies and stars, hiding within us.



THIRD PLACE

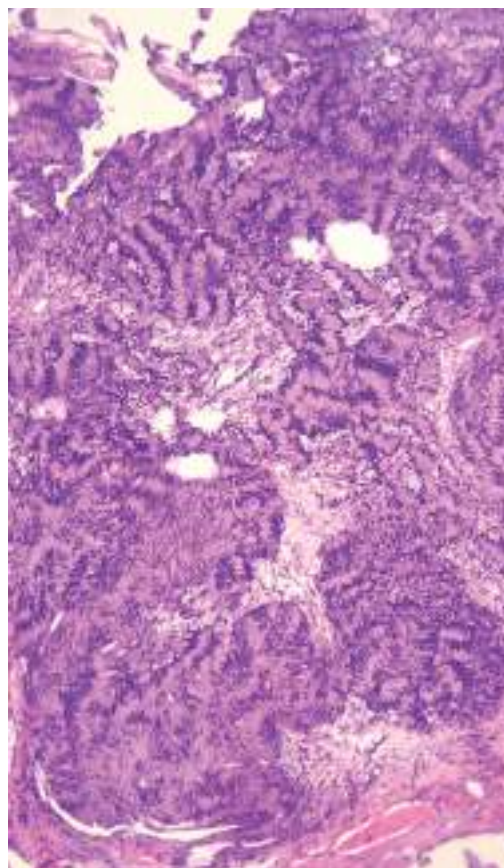
NIKKO PAOLO R. CABLAO

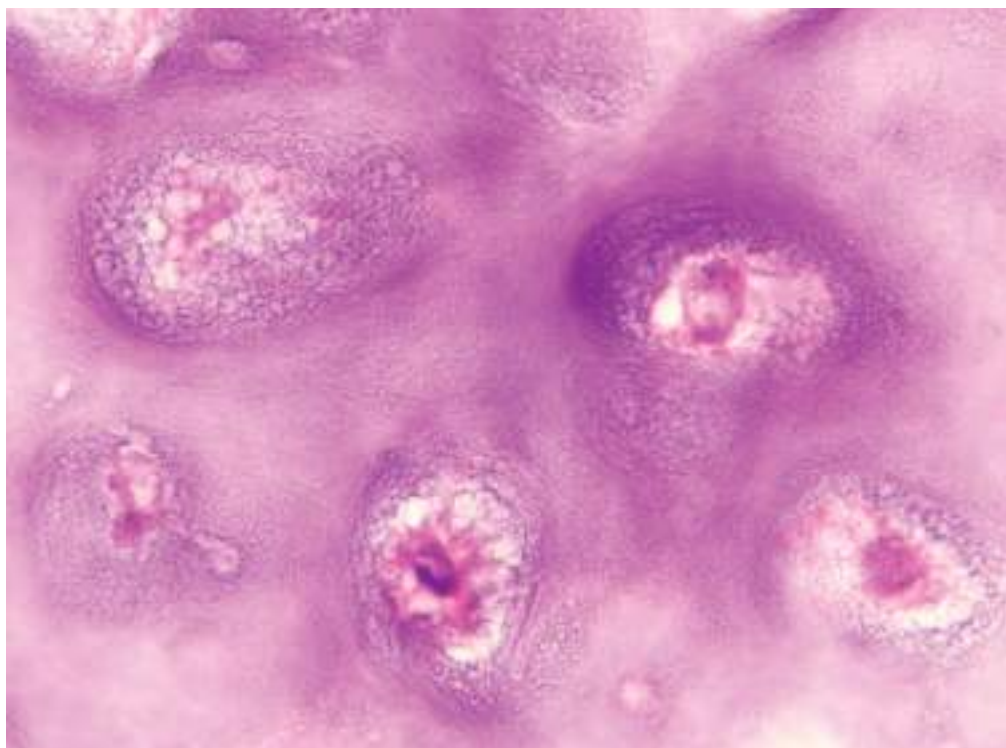
"BON VOYAGE!"

A photomicrograph of lymphovascular space invasion from an invasive mammary carcinoma in a 50-year-old female.

A ball of tumor cells is seen inside a blood vessel all set for an adventure to the great unknown. Any guesses where these guys could end up?

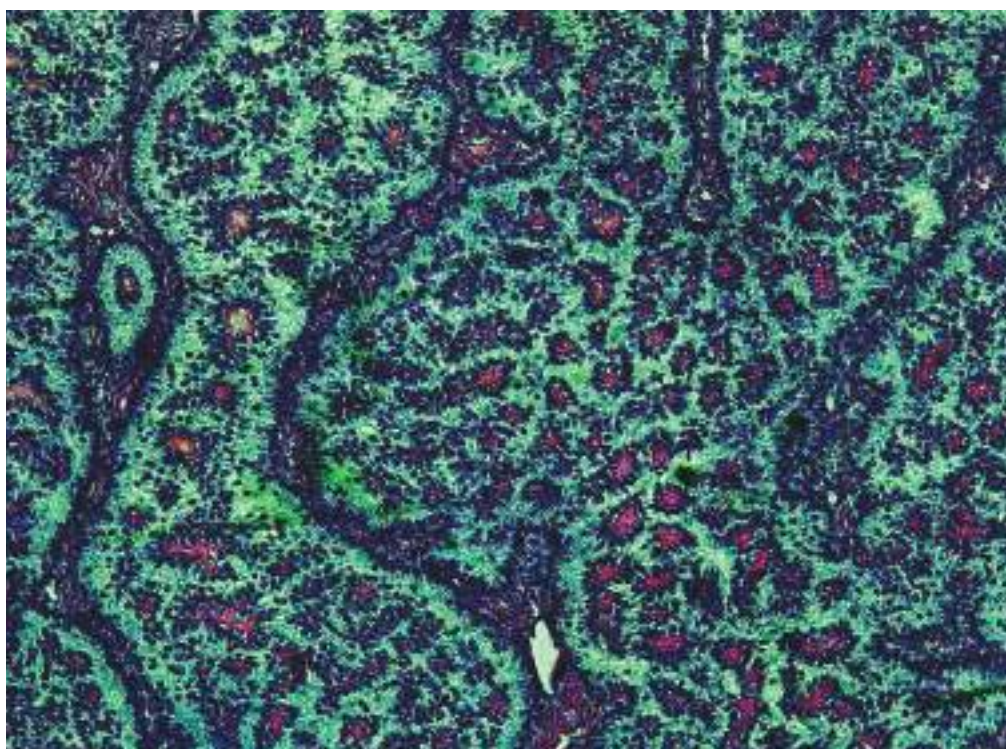
ANDREA R. VILLARUEL
"SO CLASSICAL... IT LOOKS UNUSUAL!"
Tumors want to be diagnosed. Look at the wild animal stripes in this cerebellopontine angle schwannoma. Sometimes... the horses are zebras!





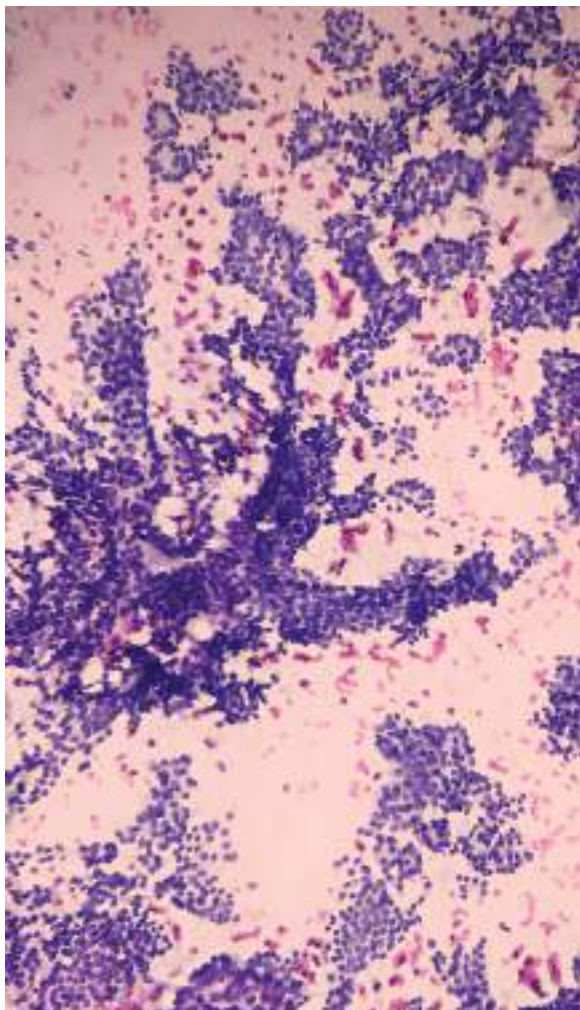
GLENN NATHANIEL SAN DIEGO VALLOSO

Olympus 5-header microscope with camera under oil-immersion objective. Narrative of the image:
An excised, solitary, slow-growing, painless, firm single nodular neck mass from an adult male.



DEMIE DANE C. SANORIA

Granulosa Cell Tumors form characteristic "Cal Exner Bodies", comprised of a single layer of granulosa cells forming "gland-like" structures containing acidophilic material. Green hues and filters were added to contrast with the purple staining nuclei and pinkish material contained within these structures, resembling rose bushes in a luminescent garden.



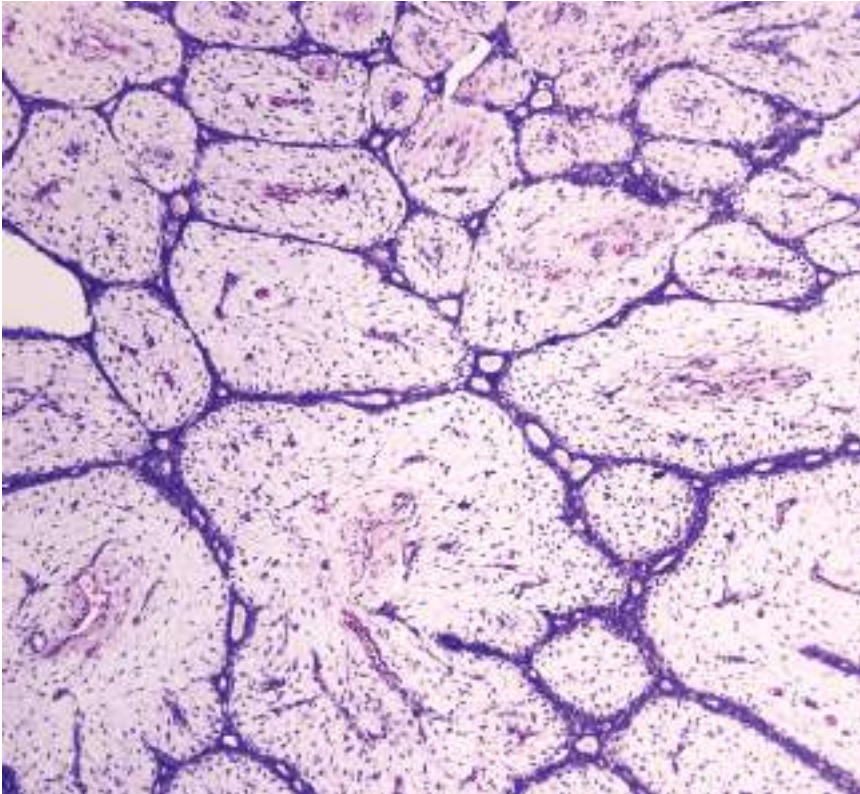
CRISTON VAN C. MANASAN
"PAP ON PAPS"
Papillary Thyroid Carcinoma
on Papanicolaou Stain

CHRISTINE MAE OLIVAR
"TOGE"

Toge sa kanyang dumi!
Dahan-dahang lumalaki.
Kumekembot unti-unti,
Para maging ispageti.

Hatching of *Ascaris lumbricoides*
Olympus CX23, 100x magnification

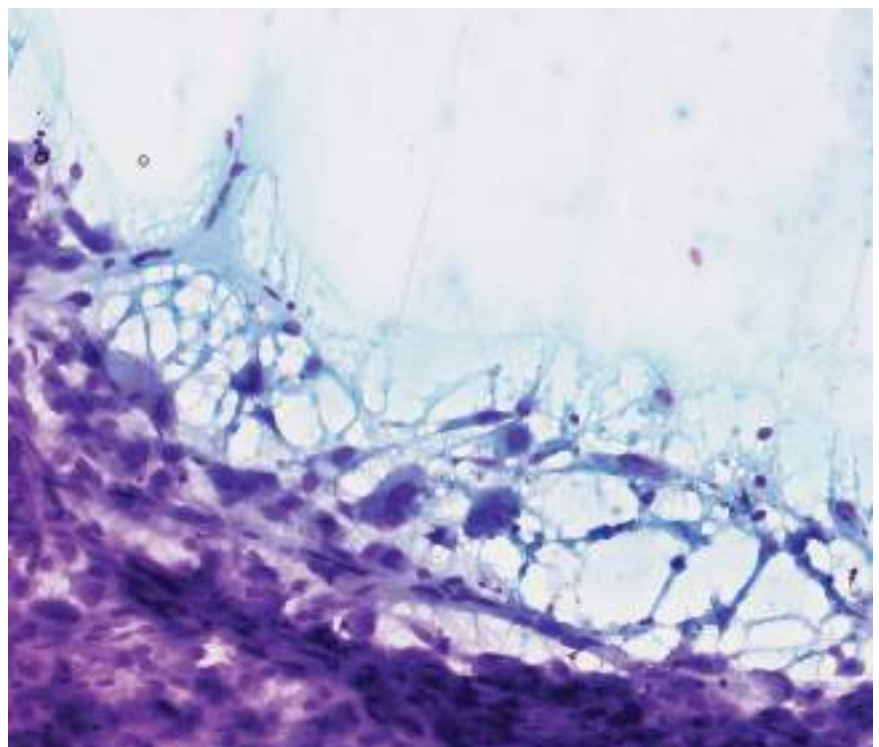


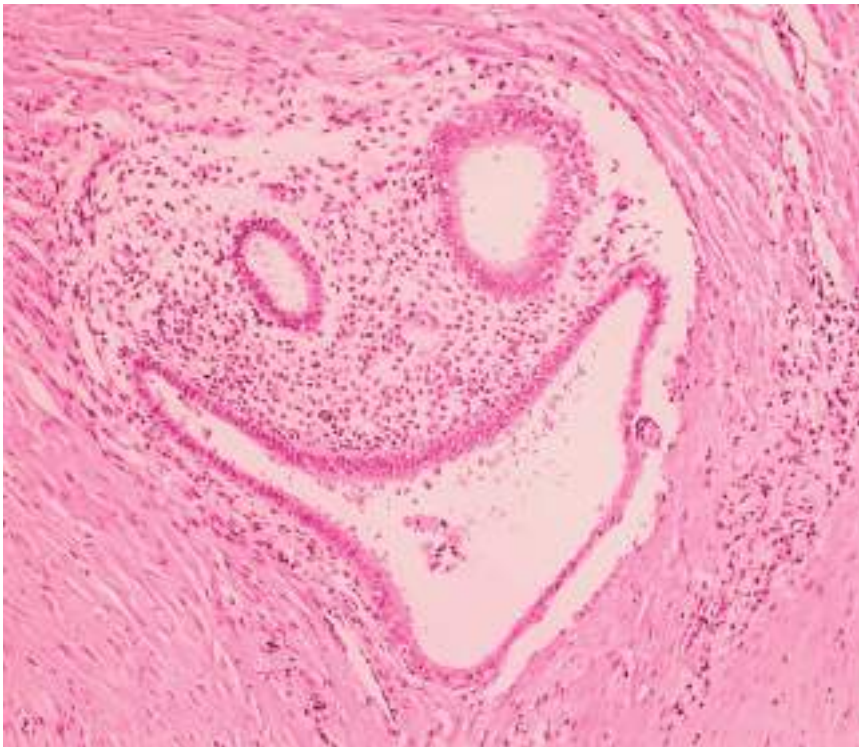


GABRIEL M. OZOA
"COBBLESTONES"
A breast mass from a
young adult female.

JOEANNE SALISE
"WAVES"
Angry waves in the ocean.
A stormy daylight.
The predator is not here.
But the creatures are in fear.

(Cytology of subependymal
giant cell astrocytoma)





LESTER FLOYD D. ZAMORA
"THE SINISTER SMILE OF PAIN"
The sinister smile that can make
even the strongest woman
bow down in pain - Oh! how
could you endometriosis?

FIRST PLACE

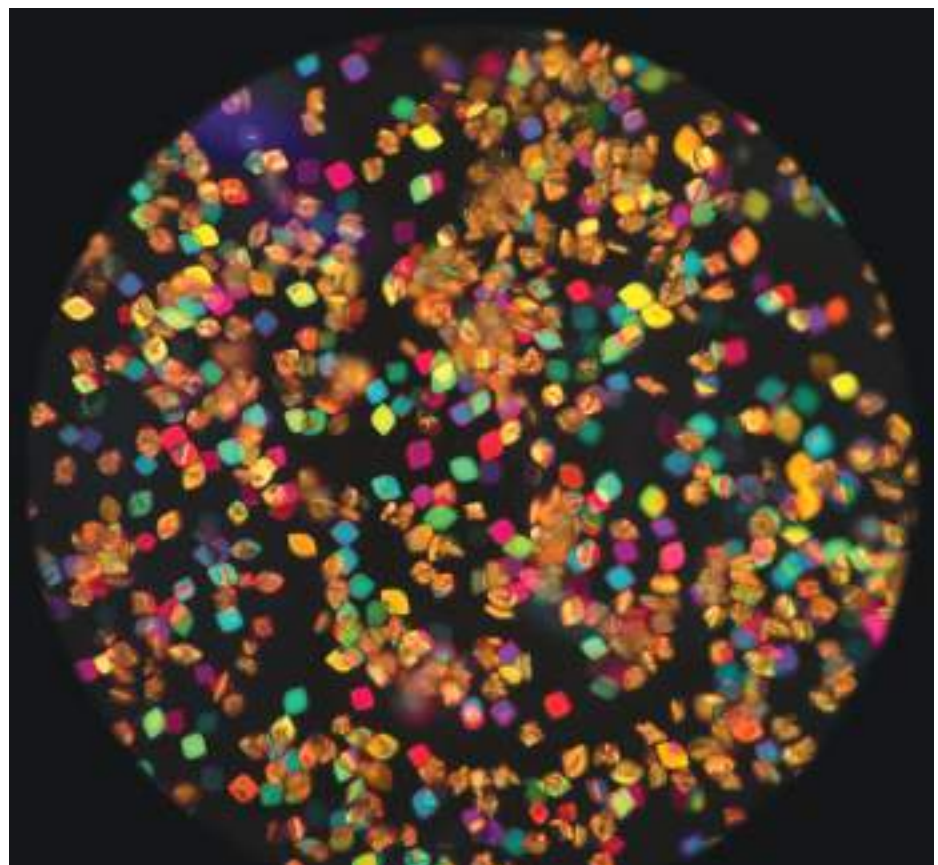
OLIVER D. PINTOR

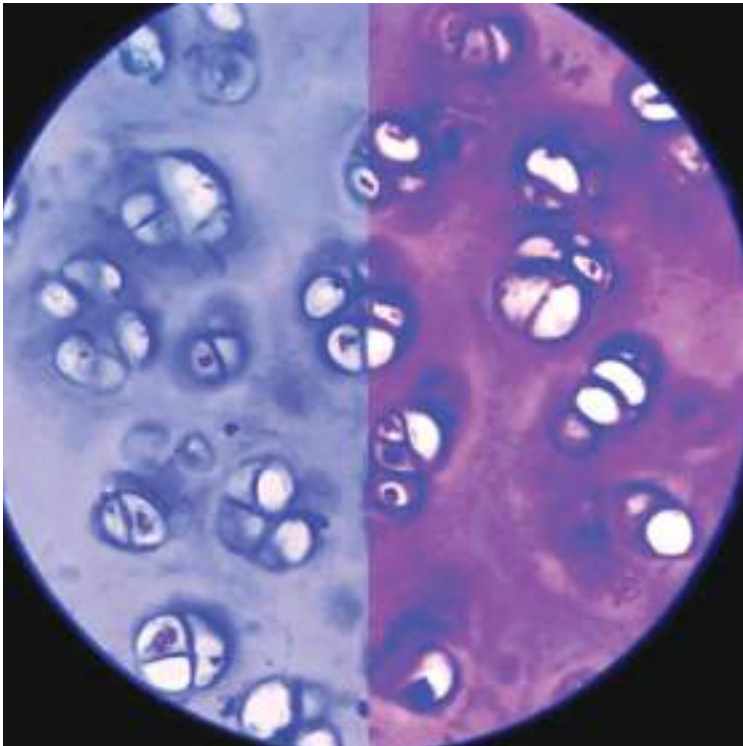
"PIXIE DUST"

Details of the microscope
and technique:

Human urine uric
acid crystals under
an Olympus CX31-P
Polarizing Microscope,
40x magnification.

"The human body is made
from a sprinkle of love, a
dash of hope, and a little
bit of pixie dust..."



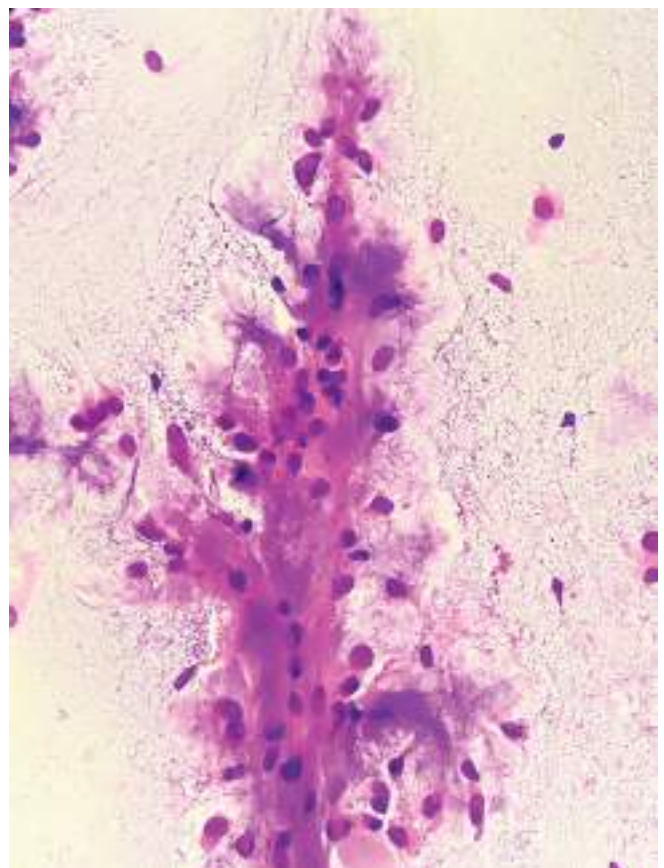


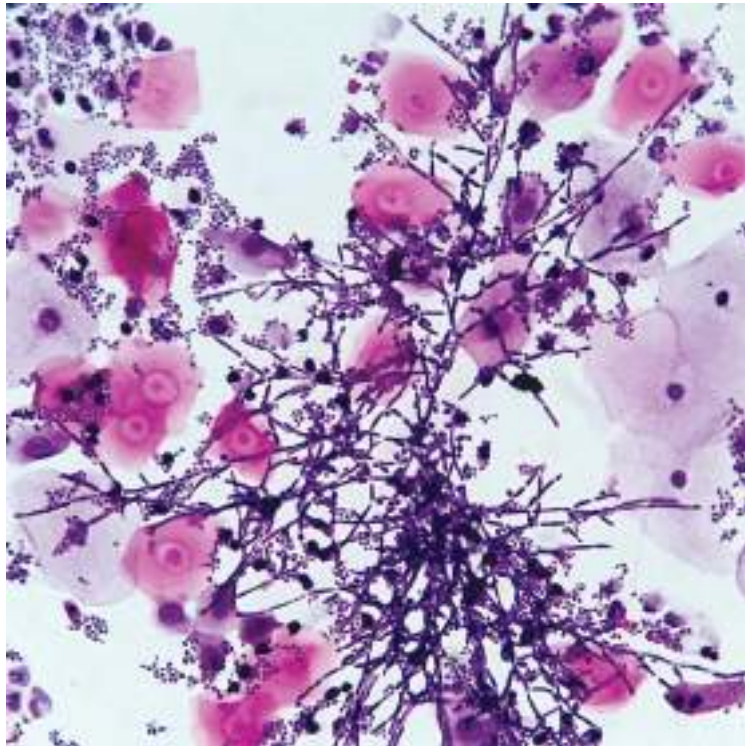
JOSEPH MICHAEL R. ESPIRITU
"VARYING SHADES OF BLUE"

The interplay of different stains: Masson trichrome and H&E with Alcian blue, bequeaths beautiful hues of this simple hyaline cartilage. Notice the beautiful blue hue of the left section elicited by Masson trichrome; while on the right, the Alcian blue outlines the lacunae on an H&E background.

VICTORIA E. CRUZ

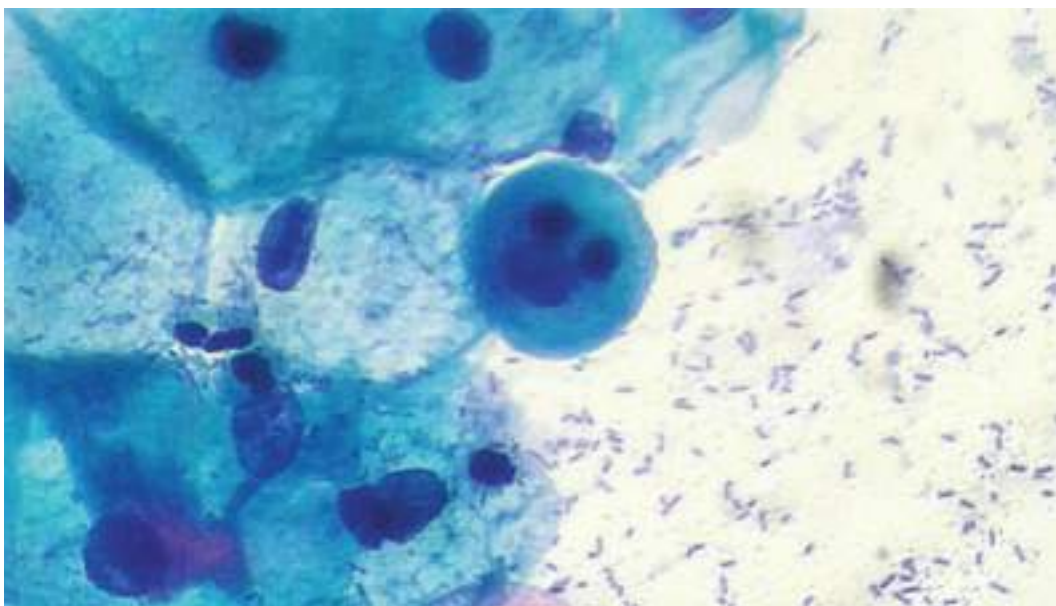
This is a smear from a fine needle aspiration biopsy of a pre-auricular mass. The smear consists of bland epithelial cells entangled with a fibrillar matrix. Diagnosis: Pleomorphic Adenoma.





PHILIPPINE HEART CENTER
"GROWING GARDEN"

'Mary, Mary, quite contrary, how does your garden grow?'.
Antibiotic use, uncontrolled diabetes, and
elevated estrogen, among other things.



Arnel Christian K. Dy
UNIVERSITY OF THE EAST RAMON MAGSAYSAY MEDICAL CENTER
"Spot the Hidden Mickey!"